



The Suit & Tuxedo

**RENTAL COLLECTION**

**JFW**

JIM'S FORMAL WEAR

STORE COPY

*We Fit Everyone!*



**Ultra Slim and Slim Fit Styles  
to fit all shapes and sizes.**

# COAT FABRIC SWATCHES FOR RENTAL

Choose your look from our collection of colored tuxedos & suits

Reference page number for tuxedo & suit details



**Color:** Granite Paisley  
**Style:** 192  
**Page:** 43



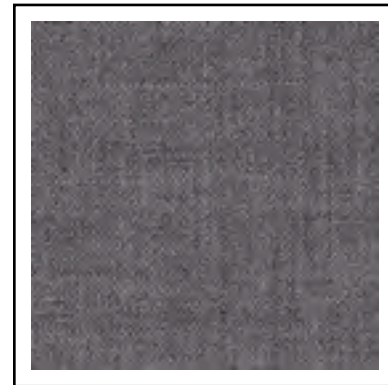
**Color:** Grey Portofino  
**Style:** 301  
**Page:** 48



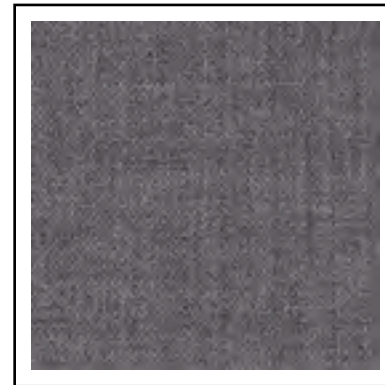
**Color:** Steel Grey  
**Styles:** 391, 392  
**Pages:** 21, 30, 31, 68



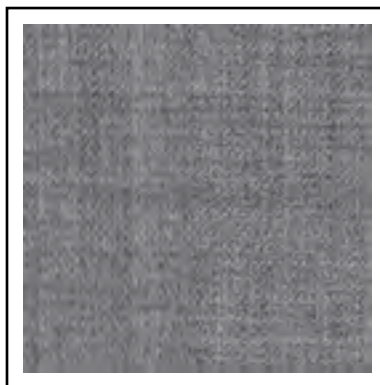
**Color:** Grey Plaid  
**Style:** 231  
**Page:** 38



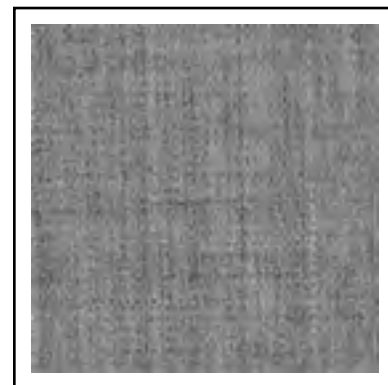
**Color:** Medium Grey  
**Style:** 350  
**Pages:** 19, 22, 23, 66



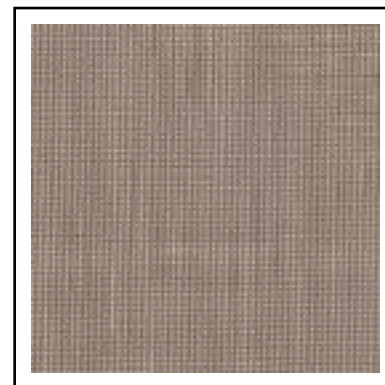
**Color:** Medium Grey  
**Style:** 322  
**Page:** 47



**Color:** Heather Grey  
**Style:** 262  
**Pages:** 20, 37, 67



**Color:** Heather Grey  
**Style:** 362  
**Page:** 46



**Color:** Sand  
**Style:** 202  
**Page:** 36

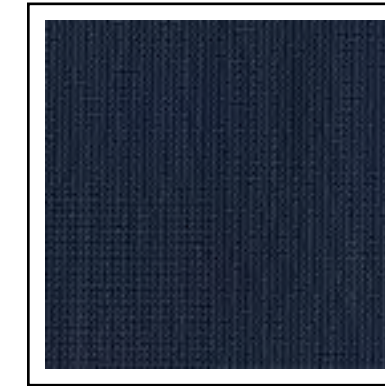
# COAT FABRIC SWATCHES FOR RENTAL

Choose your look from our collection of colored tuxedos & suits

Reference page number for tuxedo & suit details



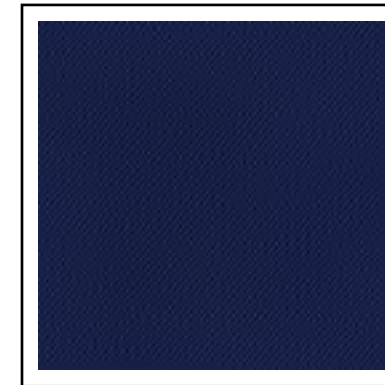
**Color:** Navy  
**Styles:** 371, 372  
**Pages:** 17, 28, 29, 65



**Color:** Slate Blue  
**Style:** 382  
**Page:** 45



**Color:** Blue  
**Style:** 302  
**Pages:** 18, 24, 25, 64



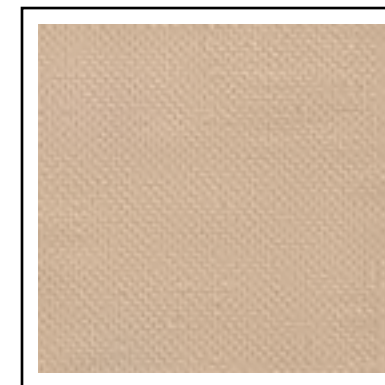
**Color:** Cobalt Blue  
**Style:** 211  
**Page:** 40



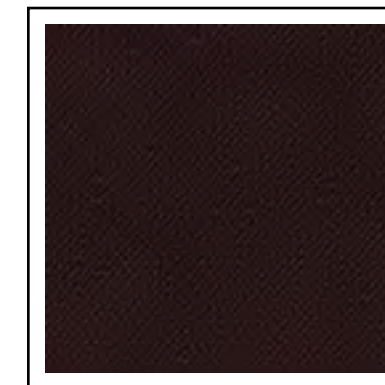
**Color:** Cobalt Paisley  
**Style:** 132  
**Page:** 44



**Color:** Indigo Blue  
**Style:** 221  
**Page:** 39



**Color:** Tan  
**Style:** 252  
**Page:** 53



**Color:** Burgundy  
**Style:** 201  
**Page:** 41



**Color:** Apple Red Paisley  
**Style:** 122  
**Page:** 42



ALLURE MEN®

Sand Brunswick  
Ultra Slim Fit Suit

Style 202

for details, see page 36



## OUR ADVANTAGES

OVER THE 'BIG BOX' STORES

- Direct Delivery Convenience
- Personalized Customer Service
- Larger Selection of Styles and Colors
- Experience and Expertise
- More Fit Options: Ultra Slim, Slim and Modern
- Better Value and Lower Prices

## DIRECT DELIVERY

HOME • OFFICE • DESTINATION

Convenient delivery options for your wedding party!



# Ring Bearer Savings!

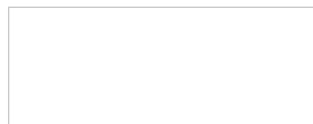
ALL STYLES are specially priced for your little guy.

**To qualify for the Ring Bearer Special Price:**

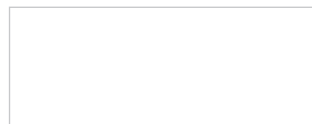
- ▶ The Ring Bearer must be accompanied by the groom's tuxedo or suit rental and five fully paid rentals in the wedding party.
- ▶ Ring Bearer's tuxedo or suit may not exceed size 16.



**All Tuxedos and Suits are specially priced for the Ring Bearer at:**



**Ringbearer Ensemble with Microfiber Shirt:**



Any pant, basic shirt, tie and premium vest included; shoes and pocket squares are additional.

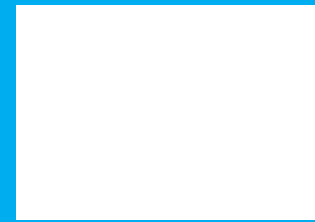
## PRICING INFORMATION

Find Tuxedos, Suits and Formal Accessories to match any budget



### DIAMOND COLLECTION | Pages 22-44

Diamond Collection ensembles include:  
Any pant, any basic shirt with nickel-plated jewelry, any tie and any vest or cummerbund.



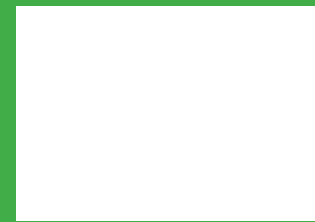
### PLATINUM COLLECTION | Pages 45-57

Platinum Collection ensembles include:  
Any pant, any basic shirt with nickel-plated jewelry, any tie and any vest or cummerbund.



### GOLD COLLECTION | Pages 58-60

Gold Collection ensembles include:  
Any pant, any basic shirt with nickel-plated jewelry, any tie and any vest or cummerbund.



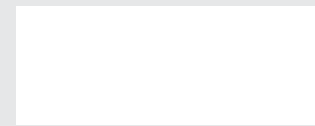
### BUDGET COLLECTION | Pages 61-62

Budget Collection ensembles include:  
Any pant, any basic shirt with nickel-plated jewelry, any tie and any vest or cummerbund.



### POCKET SQUARES

An essential component of every ensemble, a colorful pocket square is available to match nearly every fullback vest or tie offered. Don't forget to add one to your look!



### ACCIDENTAL DAMAGE WAIVER (ADW) - added to each rental

The ADW relieves you from additional charges resulting from accidental damages while the tuxedo is in your possession. The ADW does not cover malicious damages, lost or stolen items, or any late return charges.

**All Tuxedo and Suit Rentals MUST be returned the next business day to avoid additional rental charges!**



# BLACK STYLES

## **U** Ultra Slim Fit Trim and tapered styling, fits close to the body.



**921-Legacy Performance Stretch Tuxedo**  
by Michael Kors  
page 26



**471-Sterling Wedding Suit**  
by Michael Kors  
page 32



**991-Berkeley Tuxedo**  
by Michael Kors  
page 34

## **S** Slim Fit Contemporary styling with a slimming appearance.



**472-Sterling Wedding Suit**  
by Michael Kors  
page 33



**990-Berkeley Tuxedo**  
by Michael Kors  
page 35



**192-Granite Aries Paisley Tuxedo**  
by Mark of Distinction  
page 43



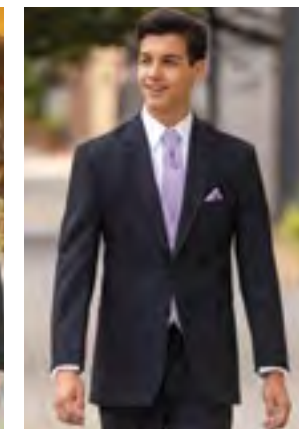
**930-Manhattan Tuxedo**  
by Tony Bowls  
page 49

# BLACK STYLES

## **M** Modern Fit Fashion-forward styling with a flattering silhouette.



**822-Cyprus Tuxedo**  
by Stephen Geoffrey  
page 50



**852-Emerson Tuxedo**  
by Stephen Geoffrey  
page 51

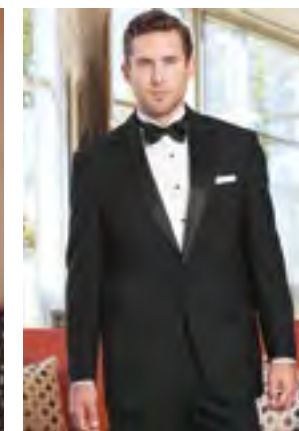


**802-Troy Tuxedo**  
by Stephen Geoffrey  
page 52

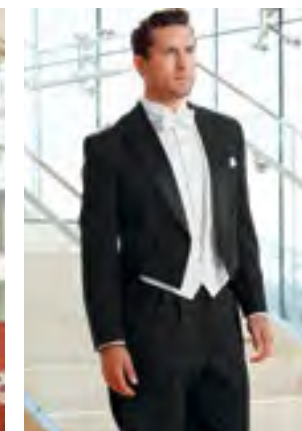
## **T** Traditional Fit A classic, fuller cut tuxedo.



**820-Classic Notch Tuxedo**  
-  
page 58



**880-Classic Peak Tuxedo**  
-  
page 61



**588-Classic Peak Fulldress**  
-  
page 62



stephengeoffrey

**Emerson**  
Style 852



# ALLURE MEN

Heather Grey Clayton  
Ultra Slim Fit Suit  
Style 262

## GREY STYLES

**U** Ultra Slim Fit  
Trim and tapered styling, fits close to the body.



350-Performance Stretch  
Wedding Suit  
by Michael Kors  
page 22



391-Sterling Wedding Suit  
by Michael Kors  
page 30



262-Clayton Suit  
by Allure Men  
page 37



231-Plaid Hamilton Suit  
by Ike Behar  
page 38

## GREY STYLES

**S** Slim Fit  
Contemporary styling with a slimming appearance.



392-Sterling Wedding Suit  
by Michael Kors  
page 31



362-Aspen Tuxedo  
by Stephen Geoffrey  
page 46



322-Aspen Tuxedo  
by Stephen Geoffrey  
page 47



301-Portofino Tuxedo  
by Tony Bowls  
page 48



# MICHAEL MICHAEL KORS

Steel Grey Sterling  
Slim Fit Wedding Suit  
Style 392



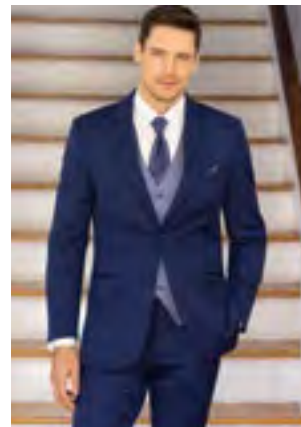
**Cobalt Aries Paisley  
Slim Fit Tuxedo**  
Style 132

## BLUE STYLES



### Ultra Slim Fit

Trim and tapered styling, fits close to the body.



**302-Performance Stretch  
Wedding Suit**  
by Michael Kors  
page 24



**371-Sterling Wedding Suit**  
by Michael Kors  
page 28



**221-Lane Tuxedo**  
by Ike Behar  
page 39



**211-Tribeca Tuxedo**  
by Ike Behar  
page 40



### Slim Fit

Contemporary styling with a slimming appearance.



**372-Sterling Wedding Suit**  
by Michael Kors  
page 29



**132-Cobalt Aries Paisley Tuxedo**  
by Mark of Distinction  
page 44



**382-Aspen Tuxedo**  
by Stephen Geoffrey  
page 45

## RED & TAN STYLES



### Ultra Slim Fit

Trim and tapered styling, fits close to the body.



**202-Brunswick Suit**  
by Allure Men  
page 36



**201-Burgundy Empire Tuxedo**  
by Kenneth Cole  
page 41



### Slim Fit

Contemporary styling with a slimming appearance.



**122-Apple Red Aries Paisley Tuxedo**  
by Mark of Distinction  
page 42



**252-Havana Suit**  
by Lord West  
page 53



**KENNETH COLE**

**Burgundy Empire Ultra Slim Fit Tuxedo**  
Style 201



# WHITE & IVORY STYLES

## U Ultra Slim Fit

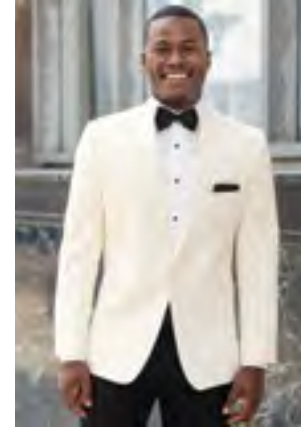
Trim and tapered styling, fits close to the body.



**751-Waverly Tuxedo**  
by Ike Behar  
page 55

## S Slim Fit

Contemporary styling with a slimming appearance.



**601-Classic Shawl**  
by Stephen Geoffrey  
page 57



**701-Classic Shawl**  
-  
page 59

## M Modern Fit

Fashion-forward styling with a flattering silhouette.



**712-Troy Tuxedo**  
by Stephen Geoffrey  
page 54



**602-Troy Tuxedo**  
by Stephen Geoffrey  
page 56

## T Traditional Fit

A classic, fuller cut tuxedo.



**571-Troy Fulldress**  
by Stephen Geoffrey  
page 60



**560-Troy Fulldress**  
by Stephen Geoffrey  
page 60

# FASHION STYLES

## U Ultra Slim Fit

Trim and tapered styling, fits close to the body.



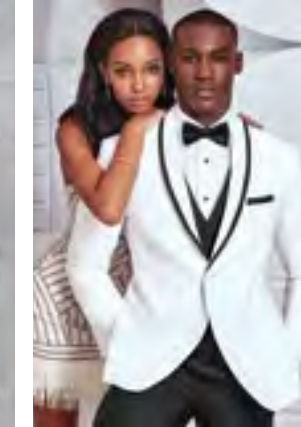
**231-Plaid Hamilton Suit**  
by Ike Behar  
page 38



**211-Tribeca Tuxedo**  
by Ike Behar  
page 40



**201-Empire Tuxedo**  
by Kenneth Cole  
page 41



**751-Waverly Tuxedo**  
by Ike Behar  
page 55

## S Slim Fit

Contemporary styling with a slimming appearance.



**122-Apple Red Aries Paisley Tuxedo**  
by Mark of Distinction  
page 42



**192-Granite Aries Paisley Tuxedo**  
by Mark of Distinction  
page 43



**132-Cobalt Aries Paisley Tuxedo**  
by Mark of Distinction  
page 44



**301-Portofino Tuxedo**  
by Tony Bowls  
page 48



**MOD**  
MARK OF DISTINCTION

Aries Paisley  
Slim Fit Tuxedos

**RENT**  
Blake rented his suit and had it shipped to his office

**BUY**  
David wears suits regularly, loved the color, and bought it

**RENT**  
Michael picked up his suit at a local store

**BUY**  
Josh bought his suit as a momento of his wedding day

**RENT**  
Chase lives out of town, had his suit shipped, and brought it along



shown:  
**ALLURE MEN®**  
Allure Men Heather Grey Clayton Suit - Style 262/N262

**RENT OR BUY**  
THESE STYLES

**RENT OR BUY**

OUR MOST POPULAR DESIGNER SUIT STYLES!

Michael Kors Navy Sterling Wedding Suit  
Styles 372/N372

Michael Kors Blue Performance Stretch Wedding Suit  
Styles 302/N302

Allure Men Heather Grey Clayton Suit  
Styles 262/N262

Michael Kors Steel Grey Sterling Wedding Suit  
Styles 392/N392

Michael Kors Medium Grey Performance Stretch Wedding Suit  
Styles 350/N350

**MICHAEL KORS**  
Navy Sterling Slim Fit Wedding Suit

To Rent See page 29 / Style 372  
To Buy See page 65 / Style N372

**RENT OR BUY**  
THIS STYLE



**MICHAEL KORS**  
**Blue Performance Stretch**  
**Ultra Slim Fit Wedding Suit**

To Rent  
See page 24 / Style 302  
To Buy  
See page 64 / Style N302

**MICHAEL KORS**  
**Medium Grey**  
**Performance Stretch**  
**Ultra Slim Fit Wedding Suit**

To Rent  
See page 22 / Style 350  
To Buy  
See page 66 / Style N350





**ALLURE MEN**  
**Heather Grey Clayton**  
**Ultra Slim Fit Suit**

**To Rent**  
See page 37 / Style 262  
**To Buy**  
See page 67 / Style N262

**MICHAEL KORS**  
**Steel Grey Sterling**  
**Slim Fit Wedding Suit**

**To Rent**  
See page 31 / Style 392  
**To Buy**  
See page 68 / Style N392



# MICHAEL KORS

## Medium Grey Performance Stretch Wedding Suit Style 350

**RENT OR BUY THIS STYLE**

To BUY see page 66

### Features:

- ▶ Tailored to fit all body types
- ▶ CoolMax® performance stretch fabric
- ▶ Self-framed notch lapel, side-vented, 29 1/2" length
- ▶ Shown with ultra slim fit pants with belt loops and buttons to accommodate suspenders

### Fabric Content:

CoolMax® / Sorona® / Wool

**Size Scale:** B - see page 71

**Men's coat sizes:** 34-66

**Boys' coat sizes:** 3-18

**350 pant sizes:** 18-65

### To order ensemble as shown:

Coat	<b>350</b>
Ultra Slim Fit Pants	<b>350</b>
Shirt (upcharge)	<b>96W</b>
Tie	<b>BNST</b>
Fullback Vest	<b>FNST</b>
Jewelry	<b>BLACK</b>
Formal Shoes (upcharge)	<b>COP</b>
Pocket Square (purchase only)	<b>PNST</b>

### Grey Pant Option:

Ultra Slim Fit Pants	<b>350</b>
----------------------	------------



Black/Brown Reversible Belt Available  
Specify NBLT; for purchase only



Trim and tapered styling, fits close to the body.



**RENT OR BUY THIS STYLE**



The Michael Kors Medium Grey Performance Stretch Wedding Suit is tailored in a unique fabric comprised of CoolMax for comfort and Sorona for maximum flexibility. You'll look great and stay comfortable and mobile during your event and the party that follows.

This style is available to RENT or BUY.

### To order ensemble A as shown:

Tie	<b>WXNU</b>
Fullback Vest	<b>F350</b>
Pocket Square (purchase only)	<b>PWNU</b>

### To order ensemble B as shown:

Tie	<b>WXFO</b>
Fullback Vest	<b>F350</b>
Pocket Square (purchase only)	<b>PWFO</b>

### To order ensemble C as shown:

Tie	<b>WXNU</b>
Fullback Vest	<b>F350</b>
Pocket Square (purchase only)	<b>PWNU</b>

### To order ensemble D as shown:

Tie	<b>WXPR</b>
Fullback Vest	<b>F350</b>
Pocket Square (purchase only)	<b>PWPR</b>



D

DIAMOND COLLECTION

B

# MICHAEL KORS

## Blue Performance Stretch Wedding Suit

Style 302

RENT  
OR  
BUY  
THIS STYLE

To BUY see page 64

### Features:

- ▶ Tailored to fit all body types
- ▶ CoolMax® performance stretch fabric
- ▶ Self-framed notch lapel, side-vented, 30 1/2" length
- ▶ Shown with ultra slim fit pants with belt loops and buttons to accommodate suspenders

### Fabric Content:

CoolMax® / Sorona® / Wool

Size Scale: B - see page 71

Men's coat sizes: 34-66

Boys' coat sizes: 3-18

302 pant sizes: 18-65

### To order ensemble as shown:

Coat	<b>302</b>
Ultra Slim Fit Pants	<b>302</b>
Shirt (upcharge)	<b>96W</b>
Tie	<b>WNMB</b>
Fullback Vest	<b>FNMB</b>
Jewelry	<b>BLACK</b>
Formal Shoes (upcharge)	<b>COP</b>
Pocket Square (purchase only)	<b>PNMB</b>

### Blue Pant Option:

Ultra Slim Fit Pants	<b>302</b>
----------------------	------------



Black/Brown Reversible Belt Available  
Specify NBLT; for purchase only



Trim and tapered styling,  
fits close to the body.



RENT  
OR  
BUY  
THIS STYLE



Tailored in a unique fabric comprised of CoolMax® for comfort and Sorona® for maximum flexibility, the **Michael Kors Blue Performance Stretch Wedding Suit** looks and feels great during your event and the celebration that follows. The suit to wear when having fun!

This style is available to RENT or BUY.

### To order ensemble A as shown:

Tie	<b>WXQZ</b>
Fullback Vest	<b>F302</b>
Pocket Square (purchase only)	<b>PWQZ</b>

### To order ensemble B as shown:

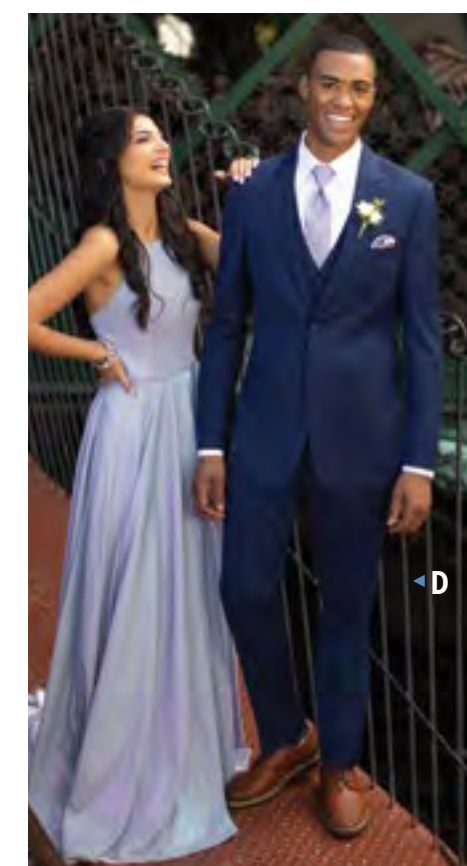
Tie	<b>WXIV</b>
Fullback Vest	<b>F302</b>
Pocket Square (purchase only)	<b>PWIV</b>

### To order ensemble C as shown:

Tie	<b>WXIV</b>
Fullback Vest	<b>F302</b>
Pocket Square (purchase only)	<b>PWIV</b>

### To order ensemble D as shown:

Tie	<b>WFDL</b>
Fullback Vest	<b>F302</b>
Pocket Square (purchase only)	<b>PFDL</b>



DIAMOND COLLECTION

# MICHAEL KORS

## Legacy Performance Stretch Tuxedo

Style 921

### Features:

- ▶ Tailored to fit all body types
- ▶ CoolMax® performance stretch fabric
- ▶ Satin notch lapel, side-vented, 30 1/2" length
- ▶ Shown with ultra slim fit pants with buttons to accommodate suspenders

### Fabric Content:

CoolMax® / Sorona® / Wool

### Size Scale: B - see page 71

Men's coat sizes: 34-66

Boys' coat sizes: 3-18

921 pant sizes: 18-65

### To order ensemble as shown:

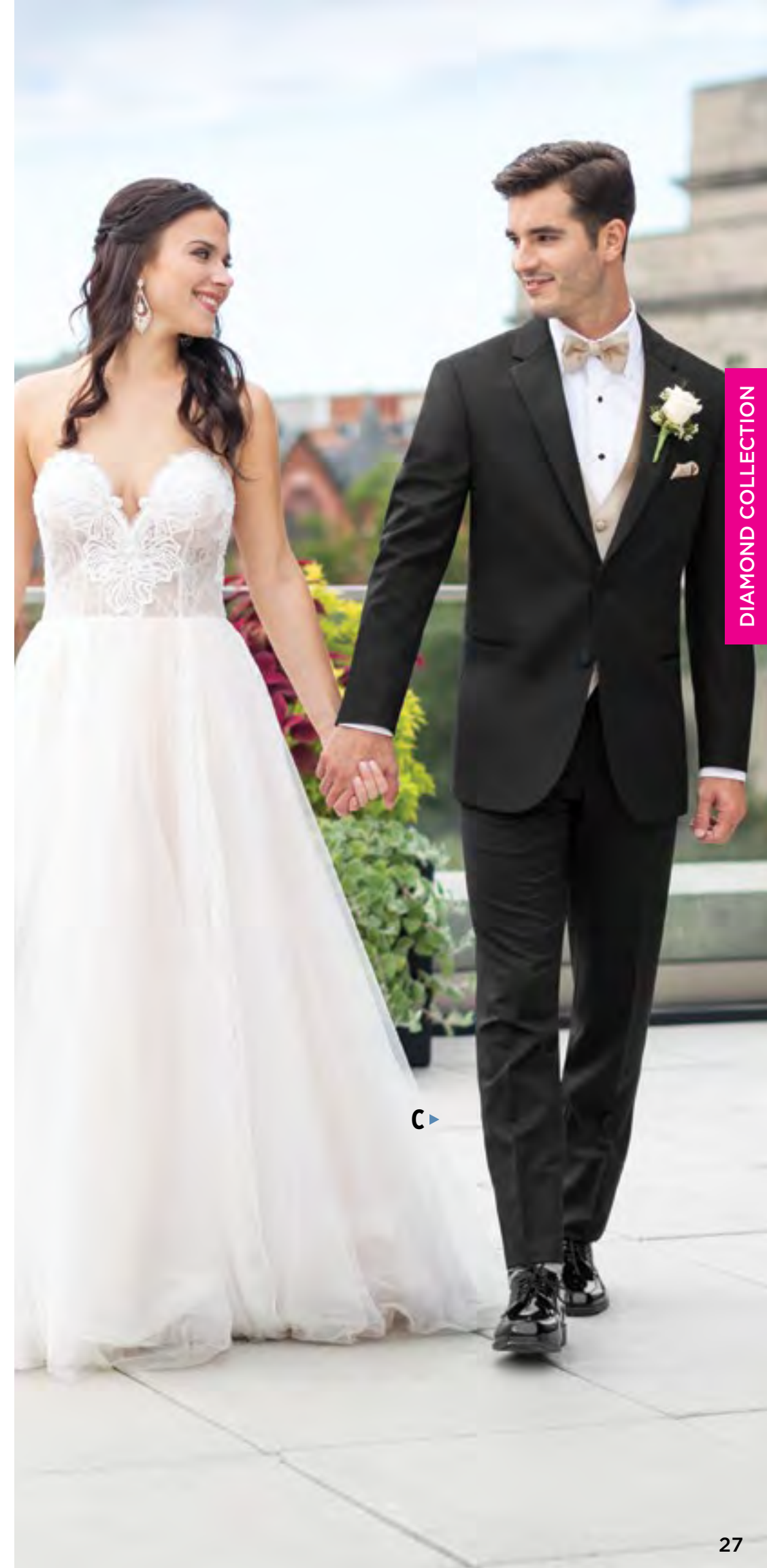
Coat	921
Ultra Slim Fit Pants	921
Shirt (upcharge)	96W
Tie	BSAT
Fullback Vest	F900
Jewelry	BLACK
Formal Shoes (upcharge)	BXS
Pocket Square (purchase only)	PSWH

### Black Pant Option:

Ultra Slim Fit Pants	921
----------------------	-----



Trim and tapered styling, fits close to the body.



### The Michael Kors Legacy Performance Stretch Tuxedo

is tailored in a unique fabric comprised of CoolMax® for comfort and Sorona® for maximum flexibility. You'll know you are wearing something special the moment you slip it on. A special tux for your special occasion.

#### To order ensemble A as shown:

Tie	BSAT
Fullback Vest	F900
Pocket Square (purchase only)	PSWH

#### To order ensemble B as shown:

Tie	WFWI
Fullback Vest	F900
Pocket Square (purchase only)	PFWI

#### To order ensemble C as shown:

Tie	BXNU
Fullback Vest	EXNU
Pocket Square (purchase only)	PWNU

# MICHAEL KORS

## Navy Sterling Wedding Suit

Style 371

### Features:

- ▶ Self-framed notch lapel, side-vented, 30<sup>1</sup>/<sub>2</sub>" length
- ▶ Shown with ultra slim fit pants with belt loops and buttons to accommodate suspenders

### Fabric Content:

Venetian Super 130's Wool

**Size Scale:** E - see page 71

**Men's coat sizes:** 34-44

**Boys' coat sizes:** N/A

**371 pant sizes:** 27-44

### Companion Coat:

Style 372 - Navy Sterling Slim Fit Wedding Suit; see page 29

### To order ensemble as shown:

Coat	<b>371</b>
Ultra Slim Fit Pants	<b>371</b>
Shirt (upcharge)	<b>96W</b>
Tie	<b>BXBL</b>
Fullback Vest	<b>F372</b>
Jewelry	<b>BLACK</b>
Formal Shoes (upcharge)	<b>CXS</b>
Pocket Square (purchase only)	<b>PSWH</b>
Belt (purchase only)	<b>NBLT</b>

### Navy Pant Options:

Ultra Slim Fit Pants	<b>371</b>
Modern Slim Fit Pants	<b>372</b>



Black/Brown Reversible Belt Available  
Specify NBLT; for purchase only



Trim and tapered styling,  
fits close to the body.

AVAILABLE IN  
TWO FITS:

ULTRA SLIM FIT  
Shown

SLIM FIT  
See page 29

RENT  
OR  
BUY  
THIS STYLE

To BUY see page 65



# MICHAEL KORS

## Navy Sterling Wedding Suit

Style 372

### Features:

- ▶ Self-framed notch lapel, side-vented, 30<sup>1</sup>/<sub>2</sub>" length
- ▶ Shown with modern slim fit pants with belt loops and buttons to accommodate suspenders

### Fabric Content:

Venetian Super 130's Wool

**Size Scale:** B - see page 71

**Men's coat sizes:** 34-66

**Boys' coat sizes:** 3-18

**372 pant sizes:** 18-65

### Companion Coat:

Style 371 - Navy Sterling Ultra Slim Fit Wedding Suit; see page 28

### To order ensemble as shown:

Coat	<b>372</b>
Modern Slim Fit Pants	<b>372</b>
Shirt (upcharge)	<b>96W</b>
Tie	<b>WFSE</b>
Fullback Vest	<b>F372</b>
Jewelry	<b>BLACK</b>
Formal Shoes (upcharge)	<b>CXS</b>
Pocket Square (purchase only)	<b>PFSE</b>
Belt (purchase only)	<b>NBLT</b>

### Navy Pant Options:

Ultra Slim Fit Pants	<b>371</b>
Modern Slim Fit Pants	<b>372</b>

AVAILABLE IN  
TWO FITS:

SLIM FIT  
Shown

ULTRA SLIM FIT  
See page 28



Contemporary styling with  
a slimming appearance.



DIAMOND COLLECTION

DIAMOND COLLECTION



# MICHAEL KORS

## Steel Grey Sterling Wedding Suit

Style 391

### Features:

- ▶ Self-framed notch lapel, side-vented, 30<sup>1</sup>/<sub>2</sub>" length
- ▶ Shown with ultra slim fit pants with belt loops and buttons to accommodate suspenders

### Fabric Content:

Venetian Super 130's Wool

### Size Scale: E - see page 71

Men's coat sizes: 34-44

Boys' coat sizes: N/A

391 pant sizes: 27-44

### Companion Coat:

Style 392 - Steel Grey Sterling Slim Fit Wedding Suit; see page 31

### To order ensemble as shown:

Coat	<b>391</b>
Ultra Slim Fit Pants	<b>391</b>
Shirt (upcharge)	<b>96W</b>
Tie	<b>WNWI</b>
Fullback Vest	<b>F392</b>
Jewelry	<b>BLACK</b>
Formal Shoes (upcharge)	<b>CXS</b>
Pocket Square (purchase only)	<b>PNWI</b>
Belt (purchase only)	<b>NBLT</b>

### Steel Grey Pant Options:

Ultra Slim Fit Pants	<b>391</b>
Modern Slim Fit Pants	<b>392</b>



Black/Brown Reversible Belt Available  
Specify NBLT; for purchase only



Trim and tapered styling, fits close to the body.

AVAILABLE IN  
TWO FITS:

**ULTRA SLIM FIT**

Shown

**SLIM FIT**

See page 31



To BUY see page 68



# MICHAEL KORS

## Steel Grey Sterling Wedding Suit

Style 392

### Features:

- ▶ Self-framed notch lapel, side-vented, 30<sup>1</sup>/<sub>2</sub>" length
- ▶ Shown with modern slim fit pants with belt loops and buttons to accommodate suspenders

### Fabric Content:

Venetian Super 130's Wool

### Size Scale: B - see page 71

Men's coat sizes: 34-66

Boys' coat sizes: 3-18

392 pant sizes: 18-65

### Companion Coat:

Style 391 - Steel Grey Sterling Ultra Slim Fit Wedding Suit; see page 30

### To order ensemble as shown:

Coat	<b>392</b>
Modern Slim Fit Pants	<b>392</b>
Shirt (upcharge)	<b>96W</b>
Tie	<b>BNST</b>
Fullback Vest	<b>F392</b>
Jewelry	<b>BLACK</b>
Formal Shoes (upcharge)	<b>COP</b>
Pocket Square (purchase only)	<b>PNST</b>
Belt (purchase only)	<b>NBLT</b>

### Steel Grey Pant Options:

Ultra Slim Fit Pants	<b>391</b>
Modern Slim Fit Pants	<b>392</b>

AVAILABLE IN  
TWO FITS:

**SLIM FIT**

Shown

**ULTRA SLIM FIT**

See page 30



Contemporary styling with a slimming appearance.

DIAMOND COLLECTION

# MICHAEL KORS

## Black Sterling Wedding Suit

Style 471

### Features:

- ▶ Self-framed notch lapel, side-vented, 30 1/2" length
- ▶ Shown with ultra slim fit pants with belt loops and buttons to accommodate suspenders

### Fabric Content:

Venetian Super 130's Wool

**Size Scale:** E - see page 71

**Men's coat sizes:** 34-44

**Boys' coat sizes:** N/A

**471 pant sizes:** 27-44

### Companion Coat:

Style 472 - Black Sterling Slim Fit Wedding Suit; see page 33

### To order ensemble as shown:

Coat	<b>471</b>
Ultra Slim Fit Pants	<b>471</b>
Shirt (upcharge)	<b>96W</b>
Tie	<b>BXBL</b>
Fullback Vest	<b>F900</b>
Jewelry	<b>BLACK</b>
Formal Shoes (upcharge)	<b>BXS</b>
Pocket Square (purchase only)	<b>PSWH</b>
Belt (purchase only)	<b>NBLT</b>

### Black Pant Options:

Ultra Slim Fit Pants	<b>471</b>
Modern Slim Fit Pants	<b>472</b>



**Black/Brown Reversible Belt Available**  
Specify **NBLT**; for purchase only



Trim and tapered styling, fits close to the body.

AVAILABLE IN  
TWO FITS:  
**ULTRA SLIM FIT**  
Shown  
**SLIM FIT**  
See page 33



# MICHAEL KORS

## Black Sterling Wedding Suit

Style 472

### Features:

- ▶ Self-framed notch lapel, side-vented, 30 1/2" length
- ▶ Shown with modern slim fit pants with belt loops and buttons to accommodate suspenders

### Fabric Content:

Venetian Super 130's Wool

**Size Scale:** B - see page 71

**Men's coat sizes:** 34-66

**Boys' coat sizes:** 3-18

**472 pant sizes:** 18-65

### Companion Coat:

Style 471 - Black Sterling Ultra Slim Fit Wedding Suit; see page 32

### To order ensemble as shown:

Coat	<b>472</b>
Modern Slim Fit Pants	<b>472</b>
Shirt (upcharge)	<b>96W</b>
Tie	<b>BXBL</b>
Fullback Vest	<b>F900</b>
Jewelry	<b>BLACK</b>
Formal Shoes (upcharge)	<b>BXS</b>
Pocket Square (purchase only)	<b>PWWH</b>
Belt (purchase only)	<b>NBLT</b>

### Black Pant Options:

Ultra Slim Fit Pants	<b>471</b>
Modern Slim Fit Pants	<b>472</b>

AVAILABLE IN  
TWO FITS:  
**SLIM FIT**  
Shown  
**ULTRA SLIM FIT**  
See page 32



Contemporary styling with a slimming appearance.



# MICHAEL KORS

## Berkeley Tuxedo Style 991

### Features:

- ▶ Grosgrain notch lapel, side-vented, 30 1/2" length
- ▶ Grosgrain trimmed pockets
- ▶ Shown with ultra slim fit pants with no stripe

### Fabric Content:

Venetian Super 130's Wool

**Size Scale:** E - see page 71

**Men's coat sizes:** 34-44

**Boys' coat sizes:** N/A

**991 pant sizes:** 18-59

### Companion Coat:

Style 990 - Berkeley Slim Fit; see page 35

### To order ensemble as shown:

Coat	<b>991</b>
Ultra Slim Fit Pants	<b>991</b>
Shirt (upcharge)	<b>96W</b>
Tie	<b>BXBL</b>
Fullback Vest	<b>F900</b>
Jewelry	<b>BLACK</b>
Formal Shoes (upcharge)	<b>BDS</b>
Pocket Square (purchase only)	<b>PSWH</b>

### Black Pant Options:

Ultra Slim Fit Pants	<b>991</b>
Modern Slim Fit Pants	<b>990</b>



Trim and tapered styling,  
fits close to the body.

AVAILABLE IN  
TWO FITS:

**ULTRA SLIM FIT**

Shown

**SLIM FIT**

See page 35

# MICHAEL KORS

## Berkeley Tuxedo Style 990

### Features:

- ▶ Grosgrain notch lapel, side-vented, 30 1/2" length
- ▶ Grosgrain trimmed pockets
- ▶ Shown with modern slim fit pants with grosgrain piping on the leg

### Fabric Content:

Venetian Super 130's Wool

**Size Scale:** B - see page 71

**Men's coat sizes:** 34-66

**Boys' coat sizes:** 3-18

**990 pant sizes:** 18-65

### Companion Coat:

Style 991 - Berkeley Ultra Slim Fit;  
see page 34

### To order ensemble as shown:

Coat	<b>990</b>
Modern Slim Fit Pants	<b>990</b>
Shirt (upcharge)	<b>96W</b>
Tie	<b>BXBL</b>
Fullback Vest	<b>F900</b>
Jewelry	<b>BLACK</b>
Formal Shoes (upcharge)	<b>BDS</b>
Pocket Square (purchase only)	<b>PSWH</b>

### Black Pant Options:

Ultra Slim Fit Pants	<b>991</b>
Modern Slim Fit Pants	<b>990</b>



Contemporary styling with  
a slimming appearance.

AVAILABLE IN  
TWO FITS:

**SLIM FIT**

Shown

**ULTRA SLIM FIT**

See page 34

# ALLURE MEN

## Sand Brunswick Suit

Style 202

### Features:

- ▶ Tailored to fit all body types
- ▶ Self-framed notch lapel, side-vented, 30" length
- ▶ Shown with ultra slim fit pants with belt loops and buttons to accommodate suspenders

### Fabric Content:

60/40 Super 130's Wool Blend

**Size Scale:** B - see page 71

**Men's coat sizes:** 34-66

**Boys' coat sizes:** 3-18

**202 pant sizes:** 18-65

### To order ensemble as shown:

Coat	<b>202</b>
Ultra Slim Fit Pants	<b>202</b>
Shirt (upcharge)	<b>96W</b>
Tie	<b>WFWI</b>
Fullback Vest	<b>F202</b>
Jewelry	<b>BLACK</b>
Formal Shoes (upcharge)	<b>COP</b>
Pocket Square (purchase only)	<b>PFWI</b>
Belt (purchase only)	<b>NBLT</b>

### Sand Pant Option:

Ultra Slim Fit Pants	<b>202</b>
----------------------	------------



Trim and tapered styling, fits close to the body.



To BUY see page 67



# ALLURE MEN

## Heather Grey Clayton Suit

Style 262

### Features:

- ▶ Tailored to fit all body types
- ▶ Self-framed notch lapel, side-vented, 29 1/8" length
- ▶ Shown with ultra slim fit pants with no stripe

### Fabric Content:

Super 130's Wool

**Size Scale:** B - see page 71

**Men's coat sizes:** 34-66

**Boys' coat sizes:** 3-18

**262 pant sizes:** 18-65

### To order ensemble as shown:

Coat	<b>262</b>
Ultra Slim Fit Pants	<b>262</b>
Shirt (upcharge)	<b>96W</b>
Tie	<b>BXNA</b>
Fullback Vest	<b>F262</b>
Jewelry	<b>BLACK</b>
Formal Shoes (upcharge)	<b>CXS</b>
Pocket Square (purchase only)	<b>PWNA</b>

### Heather Grey Pant Option:

Ultra Slim Fit Pants	<b>262</b>
----------------------	------------



Trim and tapered styling, fits close to the body.

DIAMOND COLLECTION

**Grey Plaid  
Hamilton Suit**  
Style 231

**Features:**

- ▶ Tailored to fit all body types
- ▶ Self notch lapel, flap pockets, side-vented, 30" length
- ▶ Shown with ultra slim fit pants with belt loops and buttons to accommodate suspenders

**Fabric Content:**

Super 100's Wool

**Size Scale:** D - see page 71

**Men's coat sizes:** 34-60

**Boys' coat sizes:** 3-18

**231 pant sizes:** 18-59

**To order ensemble as shown:**

Coat	<b>231</b>
Ultra Slim Fit Pants	<b>231</b>
Shirt (upcharge)	<b>96W</b>
Tie	<b>BXBH</b>
Fullback Vest	<b>EXBH</b>
Jewelry	<b>BLACK</b>
Formal Shoes (upcharge)	<b>CXS</b>
Pocket Square (purchase only)	<b>PWBH</b>
Belt (purchase only)	<b>NBLT</b>

**Grey Plaid Pant Option:**

Ultra Slim Fit Pants	<b>231</b>
----------------------	------------



**Black/Brown Reversible Belt Available**  
Specify **NBLT**; for purchase only



Trim and tapered styling,  
fits close to the body.



**Indigo Blue  
Lane Tuxedo**  
Style 221

**Features:**

- ▶ Tailored to fit all body types
- ▶ Satin-edged peak lapel, side-vented, 29 1/4" length
- ▶ Shown with ultra slim fit pants with no stripe

**Fabric Content:**

Super 120's Wool

**Size Scale:** B - see page 71

**Men's coat sizes:** 34-66

**Boys' coat sizes:** 3-18

**221 pant sizes:** 18-65

**To order ensemble as shown:**

Coat	<b>221</b>
Ultra Slim Fit Pants	<b>221</b>
Shirt (upcharge)	<b>96W</b>
Tie	<b>BXCP</b>
Fullback Vest	<b>EXCP</b>
Jewelry	<b>BLACK</b>
Formal Shoes (upcharge)	<b>CXS</b>
Pocket Square (purchase only)	<b>PWCP</b>

**Indigo Blue Pant Option:**

Ultra Slim Fit Pants	<b>221</b>
----------------------	------------



Trim and tapered styling,  
fits close to the body.



**Cobalt Blue  
Tribeca Tuxedo**  
Style 211

**Features:**

- ▶ Tailored to fit all body types
- ▶ Black satin peak lapel, side-vented, 30" length
- ▶ Black satin double besom pockets
- ▶ Shown with ultra slim fit pants with no stripe

**Fabric Content:**

Super 120's Wool

**Size Scale:** D - see page 71

**Men's coat sizes: 34-60**

**Boys' coat sizes: 3-18**

**211 pant sizes: 18-59**

**To order ensemble as shown:**

Coat	<b>211</b>
Ultra Slim Fit Pants	<b>211</b>
Shirt (upcharge)	<b>96W</b>
Tie	<b>BXBL</b>
Fullback Vest	<b>EXBL</b>
Jewelry	<b>BLACK</b>
Formal Shoes (upcharge)	<b>BDS</b>
Pocket Square (purchase only)	<b>PSWH</b>

**Cobalt Blue Pant Option:**

Ultra Slim Fit Pants **211**

**Black Pant Options:**

Ultra Slim Fit Pants **991**

Modern Slim Fit Pants **990**



Trim and tapered styling,  
fits close to the body.



**Burgundy  
Empire Tuxedo**  
Style 201

**Features:**

- ▶ Tailored to fit all body types
- ▶ Black satin peak lapel, side-vented, 30 1/2" length
- ▶ Black satin double besom pockets
- ▶ Shown with black ultra slim fit pants with no stripe

**Fabric Content:**

Super 120's Wool

**Size Scale:** D - see page 71

**Men's coat sizes: 34-60**

**Boys' coat sizes: 3-18**

**991 pant sizes: 18-59**

**To order ensemble as shown:**

Coat	<b>201</b>
Ultra Slim Fit Pants	<b>991</b>
Shirt (upcharge)	<b>96W</b>
Tie	<b>BSAT</b>
Jewelry	<b>BLACK</b>
Formal Shoes (upcharge)	<b>BDS</b>
Pocket Square (purchase only)	<b>PSWH</b>

**Black Pant Options:**

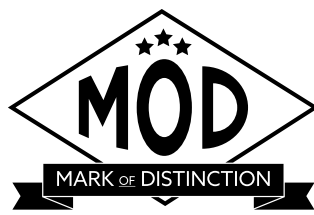
Ultra Slim Fit Pants **991**

Modern Slim Fit Pants **990**



Trim and tapered styling,  
fits close to the body.





## Apple Red Aries Paisley Tuxedo Style 122

### Features:

- ▶ Black satin shawl lapel, side-vented, 30 1/2" length
- ▶ Fabric covered buttons
- ▶ Limited size scale
- ▶ Shown with black ultra slim fit pants with no stripe

### Fabric Content:

100% Polyester

**Size Scale:** F - see page 71

**Men's coat sizes:** 34-50 (even sizes only)

**Boys' coat sizes:** 14-18 (even sizes only)

**991 pant sizes:** 18-59

### To order ensemble as shown:

Coat	<b>122</b>
Ultra Slim Fit Pants	<b>991</b>
Shirt (upcharge)	<b>96W</b>
Tie	<b>BSAT</b>
Jewelry	<b>BLACK</b>
Formal Shoes (purchase only)	<b>NBSSS</b>
Pocket Square (purchase only)	<b>PSBL</b>

### Black Pant Options:

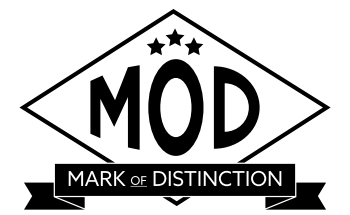
Ultra Slim Fit Pants	<b>991</b>
Modern Slim Fit Pants	<b>990</b>



Contemporary styling with a slimming appearance.



To BUY see JFW  
For Purchase Catalog



## Granite Aries Paisley Tuxedo Style 192

### Features:

- ▶ Black satin shawl lapel, side-vented, 30 1/2" length
- ▶ Fabric covered buttons
- ▶ Limited size scale
- ▶ Shown with black ultra slim fit pants with no stripe

### Fabric Content:

100% Polyester

**Size Scale:** F - see page 71

**Men's coat sizes:** 34-50 (even sizes only)

**Boys' coat sizes:** 14-18 (even sizes only)

**991 pant sizes:** 18-59

### To order ensemble as shown:

Coat	<b>192</b>
Ultra Slim Fit Pants	<b>991</b>
Shirt (upcharge)	<b>96W</b>
Tie	<b>BSAT</b>
Jewelry	<b>BLACK</b>
Formal Shoes (purchase only)	<b>NBLVS</b>
Pocket Square (purchase only)	<b>PSWH</b>

### Black Pant Options:

Ultra Slim Fit Pants	<b>991</b>
Modern Slim Fit Pants	<b>990</b>

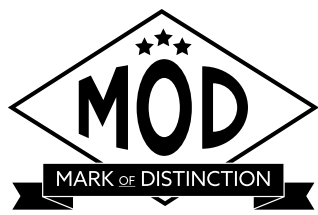


Contemporary styling with a slimming appearance.



To BUY see JFW  
For Purchase Catalog





## Cobalt Aries Paisley Tuxedo Style 132

### Features:

- ▶ Black satin shawl lapel, side-vented, 30 1/2" length
- ▶ Fabric covered buttons
- ▶ Limited size scale
- ▶ Shown with black ultra slim fit pants with no stripe

### Fabric Content:

100% Polyester

**Size Scale:** F - see page 71

**Men's coat sizes:** 34-50 (even sizes only)

**Boys' coat sizes:** 14-18 (even sizes only)

**991 pant sizes:** 18-59

### To order ensemble as shown:

Coat	<b>132</b>
Ultra Slim Fit Pants	<b>991</b>
Shirt (upcharge)	<b>96W</b>
Tie	<b>BSAT</b>
Jewelry	<b>BLACK</b>
Formal Shoes (purchase only)	<b>N3SSS</b>
Pocket Square (purchase only)	<b>PSBL</b>

### Black Pant Options:

Ultra Slim Fit Pants	<b>991</b>
Modern Slim Fit Pants	<b>990</b>



Contemporary styling with a slimming appearance.

**RENT  
OR  
BUY**  
THIS STYLE

To BUY see JFW  
For Purchase Catalog



*SG*  
stephengeoffrey

## Slate Blue Aspen Tuxedo Style 382

### Features:

- ▶ Satin-edged notch lapel, side-vented, 30 1/2" length
- ▶ Shown with modern slim fit pants with no stripe

### Fabric Content:

100% Wool

**Size Scale:** B2 - see page 71

**Men's coat sizes:** 34-66

**Boys' coat sizes:** 3-18

**382 pant sizes:** 18-65

### To order ensemble as shown:

Coat	<b>382</b>
Modern Slim Fit Pants	<b>382</b>
Shirt (upcharge)	<b>96W</b>
Tie	<b>WFBH</b>
Fullback Vest	<b>F382</b>
Jewelry	<b>BLACK</b>
Formal Shoes (upcharge)	<b>CXS</b>
Pocket Square (purchase only)	<b>PFBH</b>

### Slate Blue Pant Option:

Modern Slim Fit Pants	<b>382</b>
-----------------------	------------



Contemporary styling with a slimming appearance.





stephengeoffrey

## Heather Grey Aspen Tuxedo

Style 362

### Features:

- ▶ Satin-edged notch lapel, side-vented, 30 1/2" length
- ▶ Shown with modern slim fit pants with no stripe

### Fabric Content:

100% Wool

**Size Scale:** B - see page 71

**Men's coat sizes:** 34-66

**Boys' coat sizes:** 3-18

**362 pant sizes:** 18-65

### To order ensemble as shown:

Coat	<b>362</b>
Modern Slim Fit Pants	<b>362</b>
Shirt (upcharge)	<b>96W</b>
Tie	<b>BXWH</b>
Fullback Vest	<b>F362</b>
Jewelry	<b>BLACK</b>
Formal Shoes (upcharge)	<b>CXS</b>
Pocket Square (purchase only)	<b>PWWH</b>

### Grey Pant Options:

Ultra Slim Fit Pants	<b>361</b>
Modern Slim Fit Pants	<b>362</b>



Contemporary styling with a slimming appearance.



stephengeoffrey

## Grey Aspen Tuxedo

Style 322

### Features:

- ▶ Satin-edged notch lapel, side-vented, 30 1/2" length
- ▶ Shown with modern slim fit pants with no stripe

### Fabric Content:

100% Wool

**Size Scale:** B - see page 71

**Men's coat sizes:** 34-66

**Boys' coat sizes:** 3-18

**322 pant sizes:** 18-62

### To order ensemble as shown:

Coat	<b>322</b>
Modern Slim Fit Pants	<b>322</b>
Shirt (upcharge)	<b>96W</b>
Tie	<b>WWRP</b>
Fullback Vest	<b>F322</b>
Jewelry	<b>BLACK</b>
Formal Shoes (upcharge)	<b>BDS</b>
Pocket Square (purchase only)	<b>PWRP</b>

### Grey Pant Options:

Ultra Slim Fit Pants	<b>321</b>
Modern Slim Fit Pants	<b>322</b>



Contemporary styling with a slimming appearance.



PLATINUM COLLECTION

PLATINUM COLLECTION

**Grey Portofino Tuxedo**

Style 301

**Features:**

- ▶ Black satin peak lapel, non-vented, 30" length
- ▶ Black satin double besom pockets
- ▶ Shown with modern slim fit pants with a beaded stripe

**Fabric Content:**

55/45 Super Fine Wool Blend

**Size Scale:** B - see page 71

**Men's coat sizes: 34-66**

**Boys' coat sizes: 3-18**

**301 pant sizes: 18-65**

**To order ensemble as shown:**

Coat	<b>301</b>
Modern Slim Fit Pants	<b>301</b>
Shirt (upcharge)	<b>96W</b>
Tie	<b>WKBL</b>
Fullback Vest	<b>F900</b>
Jewelry	<b>BLACK</b>
Formal Shoes (upcharge)	<b>BDS</b>
Pocket Square (purchase only)	<b>PSWH</b>

**Grey Pant Option:**

Modern Slim Fit Pants **301**

**Black Pant Options:**

Ultra Slim Fit Pants	<b>991</b>
Modern Slim Fit Pants	<b>850</b>
Flat Front Pants	<b>800</b>



Contemporary styling with a slimming appearance.



**Manhattan Tuxedo**

Style 930

**STYLE AVAILABLE FOR SINGLE ORDERS ONLY.**

**Features:**

- ▶ Satin notch lapel, non-vented, 30" length
- ▶ Shown with modern slim fit pants with a beaded stripe

**Fabric Content:**

Super 130's Wool

**Size Scale:** B - see page 71

**Men's coat sizes: 34-66**

**Boys' coat sizes: 3-18**

**930 pant sizes: 18-65**

**To order ensemble as shown:**

Coat	<b>930</b>
Modern Slim Fit Pants	<b>930</b>
Shirt (upcharge)	<b>96W</b>
Tie	<b>BSAT</b>
Fullback Vest	<b>F900</b>
Jewelry	<b>BLACK</b>
Formal Shoes (upcharge)	<b>BDS</b>
Pocket Square (purchase only)	<b>PSWH</b>

**Black Pant Option:**

Modern Slim Fit Pants **930**



Contemporary styling with a slimming appearance.

PLATINUM COLLECTION

PLATINUM COLLECTION



stephengeoffrey

## Cyprus Tuxedo Style 822

### Features:

- ▶ Satin shawl lapel, non-vented, 3 1/2" length
- ▶ Shown with modern slim fit pants with a beaded stripe

### Fabric Content:

100% Tropical Worsted Wool

**Size Scale:** B2 - see page 71

**Men's coat sizes:** 34-66

**Boys' coat sizes:** 3-18

**850 pant sizes:** 18-59

### To order ensemble as shown:

Coat	<b>822</b>
Modern Slim Fit Pants	<b>850</b>
Shirt (upcharge)	<b>76W</b>
Tie	<b>WSKG</b>
Fullback Vest	<b>SYKG</b>
Jewelry	<b>BLACK</b>
Formal Shoes (upcharge)	<b>BDS</b>
Pocket Square (purchase only)	<b>PSKG</b>

### Black Pant Options:

Modern Slim Fit Pants	<b>850</b>
Flat Front Pants	<b>800</b>



Fashion-forward styling with a flattering appearance.



stephengeoffrey

## Emerson Tuxedo Style 852

### Features:

- ▶ Grosgrain notch lapel, non-vented, 3 1/2" length
- ▶ Grosgrain buttons
- ▶ Shown with modern slim fit pants with a beaded stripe

### Fabric Content:

100% Tropical Worsted Wool

**Size Scale:** B2 - see page 71

**Men's coat sizes:** 34-66

**Boys' coat sizes:** 3-18

**850 pant sizes:** 18-59

### To order ensemble as shown:

Coat	<b>852</b>
Modern Slim Fit Pants	<b>850</b>
Shirt (upcharge)	<b>96W</b>
Tie	<b>WKLA</b>
Fullback Vest	<b>HRLA</b>
Jewelry	<b>BLACK</b>
Formal Shoes (upcharge)	<b>BDS</b>
Pocket Square (purchase only)	<b>PKLA</b>

### Black Pant Options:

Modern Slim Fit Pants	<b>850</b>
Flat Front Pants	<b>800</b>



Fashion-forward styling with a flattering appearance.



PLATINUM COLLECTION

PLATINUM COLLECTION



stephengeoffrey

## Black Troy Tuxedo Style 802

### Features:

- ▶ Satin notch lapel, non-vented, 31½" length
- ▶ Shown with modern slim fit pants with a beaded stripe

### Fabric Content:

100% Worsted Wool

**Size Scale:** A2 - see page 71

**Men's coat sizes:** 34-74

**Boys' coat sizes:** 3-18

**850 pant sizes:** 18-59

### To order ensemble as shown:

Coat	<b>802</b>
Modern Slim Fit Pants	<b>850</b>
Shirt (upcharge)	<b>96W</b>
Tie	<b>WKSI</b>
Fullback Vest	<b>HRSI</b>
Jewelry	<b>BLACK</b>
Formal Shoes (upcharge)	<b>BDS</b>
Pocket Square (purchase only)	<b>PKSI</b>

### Black Pant Options:

Modern Slim Fit Pants	<b>850</b>
Flat Front Pants	<b>800</b>



Fashion-forward styling with a flattering appearance.



LORD & WEST

## Tan Havana Suit Style 252

### Features:

- ▶ Self notch lapel, bone buttons, side-vented, 30" length
- ▶ Shown with modern slim fit pants with no stripe

### Fabric Content:

Ultra Fine Poly / Wool Blend

**Size Scale:** B2 - see page 71

**Men's coat sizes:** 34-66

**Boys' coat sizes:** 3-18

**252 pant sizes:** 18-65

### To order ensemble as shown:

Coat	<b>252</b>
Modern Slim Fit Pants	<b>252</b>
Shirt (upcharge)	<b>96W</b>
Tie	<b>WRCP</b>
Fullback Vest	<b>F252</b>
Jewelry	<b>BLACK</b>
Formal Shoes (upcharge)	<b>CXS</b>
Pocket Square (purchase only)	<b>PKWH</b>

### Tan Pant Options:

Ultra Slim Fit Pants	<b>251</b>
Modern Slim Fit Pants	<b>252</b>



Contemporary styling with a slimming appearance.





stephengeoffrey

## White Troy Tuxedo Style 712

### Features:

- ▶ Satin notch lapel, non-vented, 3 1/2" length
- ▶ Shown with modern slim fit pants with a beaded stripe

### Fabric Content:

100% Polyester

### Size Scale: B - see page 71

Men's coat sizes: 34-66

Boys' coat sizes: 3-18

750 pant sizes: 18-65

### To order ensemble as shown:

Coat	712
Modern Slim Fit Pants	750
Shirt (upcharge)	96W
Tie	BXWH
Fullback Vest	EXWH
Jewelry	PEARL
Formal Shoes (upcharge)	WAS
Pocket Square (purchase only)	PWWH

### White Pant Option:

Modern Slim Fit Pants	750
-----------------------	-----



Fashion-forward styling with a flattering appearance.



I K E EVENING  
BY KE BEHAR

## Waverly Tuxedo Style 751

### Features:

- ▶ Tailored to fit all body types
- ▶ Self shawl lapel edged in black satin, center-vented, 30" length
- ▶ Shown with black ultra slim fit pants with no stripe

### Fabric Content:

100% Polyester

### Size Scale: D - see page 71

Men's coat sizes: 34-60

Boys' coat sizes: 3-18

991 pant sizes: 18-59

### To order ensemble as shown:

Coat	751
Ultra Slim Fit Pants	991
Shirt (upcharge)	96W
Tie	BXBL
Fullback Vest	EXBL
Jewelry	BLACK
Formal Shoes (upcharge)	BDS
Pocket Square (purchase only)	PWBL

### White Pant Option:

Modern Slim Fit Pants	750
-----------------------	-----

### Black Pant Options:

Ultra Slim Fit Pants	991
Modern Slim Fit Pants	850
Flat Front Pants	800



Trim and tapered styling, fits close to the body.

PLATINUM COLLECTION

PLATINUM COLLECTION



stephengeoffrey

## Ivory Troy Tuxedo Style 602

### Features:

- ▶ Satin notch lapel, non-vented, 31½" length
- ▶ Shown with modern slim fit pants with a beaded stripe

### Fabric Content:

100% Polyester

**Size Scale:** B2 - see page 71

**Men's coat sizes:** 34-66

**Boys' coat sizes:** 3-18

**650 pant sizes:** 18-65

### To order ensemble as shown:

Coat	<b>602</b>
Modern Slim Fit Pants	<b>650</b>
Shirt (upcharge)	<b>96W</b>
Tie	<b>WRGO</b>
Fullback Vest	<b>HRGO</b>
Jewelry	<b>BLACK</b>
Formal Shoes (upcharge)	<b>IAS</b>
Pocket Square (purchase only)	<b>PKGO</b>

### Ivory Pant Option:

Modern Slim Fit Pants	<b>650</b>
-----------------------	------------



Fashion-forward styling with a flattering appearance.



To BUY see JFW  
For Purchase Catalog



stephengeoffrey

## Ivory Classic Shawl Tuxedo Style 601

### Features:

- ▶ Self shawl lapel, side-vented, 30½" length
- ▶ Shown with black ultra slim fit pants with no stripe

### Fabric Content:

100% Polyester

**Size Scale:** B - see page 71

**Men's coat sizes:** 34-66

**Boys' coat sizes:** 3-18

**991 pant sizes:** 18-59

### To order ensemble as shown:

Coat	<b>601</b>
Ultra Slim Fit Pants	<b>991</b>
Shirt (upcharge)	<b>96W</b>
Tie	<b>BSAT</b>
Sash	<b>CUMB</b>
Jewelry	<b>BLACK</b>
Formal Shoes (upcharge)	<b>BDS</b>
Pocket Square (purchase only)	<b>PSBL</b>

### Ivory Pant Option:

Modern Slim Fit Pants	<b>650</b>
-----------------------	------------

### Black Pant Options:

Ultra Slim Fit Pants	<b>991</b>
Modern Slim Fit Pants	<b>850</b>
Flat Front Pants	<b>800</b>



Contemporary styling with a slimming appearance.



PLATINUM COLLECTION

PLATINUM COLLECTION

## Classic Notch Tuxedo

### Style 820

#### Features:

- ▶ Satin notch lapel, non-vented, 3 1/2" length
- ▶ Shown with modern slim fit pants with a beaded stripe

#### Fabric Content:

100% Worsted Wool

**Size Scale:** A - see page 71; expanded sizes available

**Men's coat sizes: 34-74**

**Boys' coat sizes: 2-18**

**850 pant sizes: 18-59**

#### To order ensemble as shown:

Coat	<b>820</b>
Modern Slim Fit Pants	<b>850</b>
Shirt	<b>85W</b>
Tie	<b>BSAT</b>
Sash	<b>CUMB</b>
Jewelry	<b>BLACK</b>
Formal Shoes (upcharge)	<b>BAS</b>
Pocket Square (purchase only)	<b>PSWH</b>

#### Black Pant Options:

Modern Slim Fit Pants	<b>850</b>
Flat Front Pants	<b>800</b>



A classic, fuller cut tuxedo.



To BUY see JFW  
For Purchase Catalog



## White Classic Shawl Tuxedo

### Style 701

#### Features:

- ▶ Self shawl lapel, flap pockets, non-vented, 30" length
- ▶ Shown with black modern slim fit pants with a beaded stripe

#### Fabric Content:

100% Polyester

**Size Scale:** B2 - see page 71

**Men's coat sizes: 34-66**

**Boys' coat sizes: 3-18**

**850 pant sizes: 18-59**

#### To order ensemble as shown:

Coat	<b>701</b>
Modern Slim Fit Pants	<b>850</b>
Shirt	<b>85W</b>
Tie	<b>BSAT</b>
Sash	<b>CUMB</b>
Jewelry	<b>BLACK</b>
Formal Shoes (upcharge)	<b>BDS</b>
Pocket Square (purchase only)	<b>PSBL</b>

#### White Pant Option:

Modern Slim Fit Pants	<b>750</b>
-----------------------	------------

#### Black Pant Options:

Modern Slim Fit Pants	<b>850</b>
Flat Front Pants	<b>800</b>



Contemporary styling with a slimming appearance.



A ▶



B ▶



stephengeoffrey

**White Troy Fulldress Tuxedo**

Style 571



A classic, fuller cut tuxedo.

**Features:**

- ▶ Six-button full dress styling
- ▶ Satin notch lapel, center-vented tail, 39" length
- ▶ Shown with modern slim fit pants with a beaded stripe

**Fabric Content:**

100% Polyester

**Size Scale:** D - see page 71

**Men's coat sizes: 34-60**

**Boys' coat sizes: 3-18**

**750 pant sizes: 18-65**

**To order ensemble A as shown:**

Coat	<b>571</b>
Modern Slim Fit Pants	<b>750</b>
Shirt	<b>86W</b>
Tie	<b>BDWH</b>
Sash	<b>CDWH</b>
Jewelry	<b>PEARL</b>
Formal Shoes (upcharge)	<b>WAS</b>
Pocket Square (purchase only)	<b>PSWH</b>

**White Pant Option:**

Modern Slim Fit Pants	<b>750</b>
-----------------------	------------



stephengeoffrey

**Ivory Troy Fulldress Tuxedo**

Style 560



A classic, fuller cut tuxedo.

**Features:**

- ▶ Six-button full dress styling
- ▶ Satin notch lapel, center-vented tail, 39" length
- ▶ Shown with modern slim fit pants with a beaded stripe

**Fabric Content:**

100% Polyester

**Size Scale:** D - see page 71

**Men's coat sizes: 34-60**

**Boys' coat sizes: 3-18**

**650 pant sizes: 18-65**

**To order ensemble B as shown:**

Coat	<b>560</b>
Modern Slim Fit Pants	<b>650</b>
Shirt	<b>86I</b>
Tie	<b>BDDW</b>
Sash	<b>CDDW</b>
Jewelry	<b>PEARL</b>
Formal Shoes (upcharge)	<b>IAS</b>
Pocket Square (purchase only)	<b>PSIV</b>

**Ivory Pant Option:**

Modern Slim Fit Pants	<b>650</b>
-----------------------	------------

**Classic Peak Tuxedo**

Style 880

**Features:**

- ▶ Satin peak lapel, center-vented, 3 1/2" length
- ▶ Shown with modern slim fit pants with a beaded stripe

**Fabric Content:**

100% Worsted Wool

**Size Scale:** A - see page 71;

expanded sizes available

**Men's coat sizes: 34-74**

**Boys' coat sizes: 2-18**

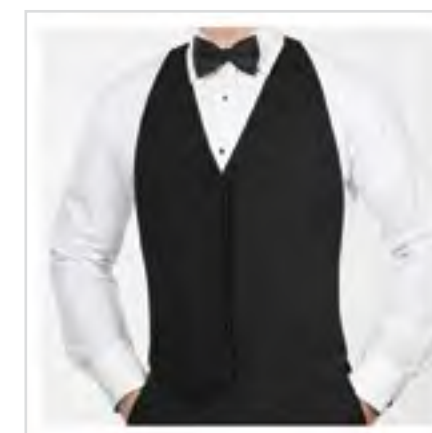
**850 pant sizes: 18-59**

**To order ensemble as shown:**

<b>MAIN</b>	
Coat	<b>880</b>
Modern Slim Fit Pants	<b>850</b>
Shirt	<b>85W</b>
Tie	<b>BSAT</b>
Sash	<b>CUMB</b>
Jewelry	<b>BLACK</b>
Formal Shoes (upcharge)	<b>BAS</b>
Pocket Square (purchase only)	<b>PSWH</b>
<b>INSET</b>	
Shirt (upcharge)	<b>96W</b>
Backless Vest	<b>V880</b>

**Black Pant Options:**

Modern Slim Fit Pants	<b>850</b>
Flat Front Pants	<b>800</b>



A classic, fuller cut tuxedo.



## Classic Peak Fulldress Tuxedo Style 588

### Features:

- ▶ Six-button fulldress styling
- ▶ Satin peak lapel, center-vented tail, 42" length
- ▶ Shown with modern slim fit pants with a beaded stripe

### Fabric Content:

100% Tropical Worsted Wool

**Size Scale:** D - see page 71

**Men's coat sizes: 34-60**

**Boys' coat sizes: 3-18**

**850 pant sizes: 18-59**

### To order ensemble as shown:

Coat	<b>588</b>
Modern Slim Fit Pants	<b>850</b>
Shirt	<b>36W</b>
Tie	<b>BPIQ</b>
Vest	<b>VPIQ</b>
Jewelry	<b>PEARL</b>
Formal Shoes (upcharge)	<b>BAS</b>
Pocket Square (purchase only)	<b>PSWH</b>

### Black Pant Options:

Modern Slim Fit Pants	<b>850</b>
Flat Front Pants	<b>800</b>



# SUITS TUXEDOS ACCESSORIES

for purchase

Reference For Purchase catalog for additional items



**RENT  
OR  
BUY**  
THIS STYLE

To RENT see pages 24-25

**MICHAEL KORS**

**BLUE  
PERFORMANCE  
STRETCH  
WEDDING SUIT**



**SEPARATES  
COLLECTION**  
Mix and match your coat and pant  
sizes for the perfect fit.



**RENT  
OR  
BUY**  
THIS STYLE

To RENT see page 29

**MICHAEL KORS**

**NAVY  
STERLING  
WEDDING SUIT**

**SEPARATES  
COLLECTION**  
Mix and match your coat and pant  
sizes for the perfect fit.



**Blue Performance Stretch  
Suit Coat | N302C**  
Slim fit; 2-button; flap pockets; side-  
vented; mitered sleeves with buttons

**\$299.99**  
Coat Purchase Price

**Blue Performance Stretch  
Suit Pants | N302P**  
Slim fit; flat front; exact waist; belt loops;  
buttons to accommodate suspenders

**\$130.00**  
Pant Purchase Price

**Blue Performance Stretch  
Fullback Vest | NF302**  
4-button; adjustable back;  
darted pockets

**\$79.99**  
Fullback Vest Purchase Price

**Fabric Content:** CoolMax® /  
Sorona® / Wool  
**Coat Sizing:** Regular: 34-66  
Short: 34-56  
Long: 34-66  
X-Long: 38-56  
(even sizes only)  
**Pant Sizing:** Regular: 28-66  
Short: 28-66  
Long: 28-66  
(even sizes only)  
**Vest Sizing:**  
RXS - 5XA

**Navy Sterling Suit Coat | N372C**  
Slim fit; 2-button; flap pockets; side-  
vented; mitered sleeves with buttons

**\$299.99**  
Coat Purchase Price

**Navy Sterling Suit Pants | N372P**  
Slim fit; flat front; exact waist; belt loops;  
buttons to accommodate suspenders

**\$130.00**  
Pant Purchase Price

**Navy Sterling Fullback Vest | NF372**  
4-button; adjustable back;  
darted pockets

**\$79.99**  
Fullback Vest Purchase Price

**Fabric Content:** Super 130's Wool  
**Coat Sizing:** Regular: 34-66  
Short: 34-56  
Long: 34-66  
X-Long: 38-56  
(even sizes only)  
**Pant Sizing:** Regular: 28-66  
Short: 28-66  
Long: 28-66  
(even sizes only)  
**Vest Sizing:**  
RXS - 5XA

Also Shown: Floral Windsor Tie | NWFPT - see page 31 or JFW "For Purchase" catalog

Also Shown: Floral Windsor Tie | NWFSE - see page 31 in JFW "For Purchase" catalog



RENT OR BUY THIS STYLE

To RENT see page 22

### MICHAEL KORS

MEDIUM GREY PERFORMANCE STRETCH WEDDING SUIT



SEPARATES COLLECTION Mix and match your coat and pant sizes for the perfect fit.

RENT OR BUY THIS STYLE

To RENT see page 37

### ALLURE MEN®

HEATHER GREY CLAYTON SUIT

SEPARATES COLLECTION Mix and match your coat and pant sizes for the perfect fit.



Medium Grey Performance Stretch Suit Coat | N350C Slim fit; 2-button; flap pockets; side-vented; mitered sleeves with buttons

\$299.99 Coat Purchase Price

Medium Grey Performance Stretch Suit Pants | N350P Slim fit; flat front; exact waist; belt loops; buttons to accommodate suspenders

\$130.00 Pant Purchase Price

Medium Grey Performance Stretch Fullback Vest | NF350 4-button; adjustable back; darted pockets

\$79.99 Fullback Vest Purchase Price

Fabric Content: CoolMax® / Sorona® / Wool

Coat Sizing: Regular: 34-66 Short: 34-56 Long: 34-66 X-Long: 38-56 (even sizes only) Pant Sizing: Regular: 28-66 Short: 28-66 Long: 28-66 (even sizes only)

Vest Sizing: RXS - 5XA

Heather Grey Clayton Suit Coat | N262C Slim fit; 2-button; flap pockets; side-vented; mitered sleeves with buttons

\$299.99 Coat Purchase Price

Heather Grey Clayton Suit Pants | N262P Slim fit; flat front; exact waist; belt loops; buttons to accommodate suspenders

\$130.00 Pant Purchase Price

Heather Grey Clayton Fullback Vest | NF262 5-button; adjustable back; darted pockets

\$79.99 Fullback Vest Purchase Price

Fabric Content: Super 130's Wool

Coat Sizing: Regular: 34-66 Short: 34-56 Long: 34-66 X-Long: 38-56 (even sizes only) Pant Sizing: Regular: 28-66 Short: 28-66 Long: 28-66 (even sizes only)

Vest Sizing: RXS - 5XA

Also Shown: Solid Bow Tie | NBXNA - see page 32 in JFW "For Purchase" catalog

Also Shown: Solid Windsor Tie | NWWFB - see page 33 of JFW "For Purchase" catalog



**RENT  
OR  
BUY**  
THIS STYLE

To RENT see page 31

## MICHAEL KORS

**STEEL GREY  
STERLING  
WEDDING SUIT**

### SEPARATES COLLECTION

Mix and match your coat and pant sizes for the perfect fit.

**RENT  
OR  
BUY**  
THESE STYLES

## MICHAEL KORS WINDSOR TIES

**\$39.99**

Pricing for Striped, Solid & Floral Windsor Ties

Available in men's regular and long sizes only. Boys' sizes not available for purchase. Rental styles are pre-tied.



**Striped Windsor Ties**  
available in 28 colors  
self-tie



**Solid Windsor Ties**  
available in 25 colors  
self-tie



**Floral Windsor Ties**  
available in 24 colors  
self-tie

**RENT  
OR  
BUY**  
THESE STYLES

## MICHAEL KORS BOW TIES

**\$34.99**

Pricing for Solid & Floral Bow Ties

Available in men's sizes only. Boys' sizes not available for purchase.



**Solid Bow Ties**  
available in 15 colors  
pre-tied



**Floral Bow Ties**  
available in 18 colors  
pre-tied

**Steel Grey Sterling Suit Coat | N392C**  
Slim fit; 2-button; flap pockets; side-vented; mitered sleeves with buttons

**\$299.99**

Coat Purchase Price

**Steel Grey Sterling Suit Pants | N392P**  
Slim fit; flat front; exact waist; belt loops; buttons to accommodate suspenders

**\$130.00**

Pant Purchase Price

**Steel Grey Sterling Fullback Vest | NF392**  
4-button; adjustable back; darted pockets

**\$79.99**

Fullback Vest Purchase Price

**Fabric Content:** Super 130's Wool

**Coat Sizing:**

Regular: 34-66

Short: 34-56

Long: 34-66

X-Long: 38-56  
(even sizes only)

**Pant Sizing:**

Regular: 28-66

Short: 28-66

Long: 28-66

(even sizes only)

**Vest Sizing:**

RXS - 5XA

Also Shown: Solid Bow Tie | NBXBL - see page 32 in JFW "For Purchase" catalog

# Buy a Coat & Pant... Save on your Accessories!

## FOR RENTAL

### RENTAL PACKAGE with shoe

Package Price:

SHIRT



TIE



(bow or windsor)

VEST or SUSPENDER



POCKET SQUARE



SHOE



### RENTAL PACKAGE without shoe

Package Price:

SHIRT



TIE



(bow or windsor)

VEST or SUSPENDER



POCKET SQUARE



## FOR PURCHASE

### PURCHASE PACKAGE with vest

Package Price:

SHIRT



TIE



VEST



POCKET SQUARE



### PURCHASE PACKAGE with suspender

Package Price:

SHIRT



TIE



SUSPENDER



POCKET SQUARE



## SIZE SCALE REFERENCE GUIDE

### Coat Sizing Scales

Use these sizing scales as guides to see which styles are available in a particular size.

SCALE A	
<b>MEN'S</b>	
Regular	34-74
Portly Regular	40-60
Short	34-60
Long	36-74
Extra Long	38-66
<b>BOYS'</b>	
Regular	2-18
Husky	8-18
Coats available in this scale:	
820 page 58	880 page 61

SCALE A2	
<b>MEN'S</b>	
Regular	34-74
Short	34-60
Long	36-74
Extra Long	38-66
<b>BOYS'</b>	
Regular	3-18
Husky	8-16
Coats available in this scale:	
802 page 52	

SCALE B					
<b>MEN'S</b>					
Regular	34-66				
Short	34-56				
Long	34-66				
Extra Long	38-56				
<b>BOYS'</b>					
Regular	3-18				
Husky	8-16				
Coats available in this scale:					
202 page 36	221 page 39	262 pages 20, 37, 67	301 page 48	302 pages 18, 24-25, 64	322 page 47
350 pages 19, 22-23, 66	362 page 46	372 pages 17, 29, 65	392 pages 21, 31, 68	472 page 33	601 page 57
712 page 54	921 pages 26-27	930 page 49	990 page 35		

SCALE B2					
<b>MEN'S</b>					
Regular	34-66				
Short	34-56				
Long	36-66				
Extra Long	38-56				
<b>BOYS'</b>					
Regular	3-18				
Husky	8-16				
Coats available in this scale:					
252 page 53	382 page 45	602 page 56	701 page 59	822 page 50	852 page 51

SCALE D					
<b>MEN'S</b>					
Regular	34-60				
Short	34-50				
Long	36-60				
Extra Long	38-50				
<b>BOYS'</b>					
Regular	3-18				
Husky	N/A				
Coats available in this scale:					
201 page 41	211 page 40	231 page 38	560 page 60	571 page 60	588 page 62
751 page 55					

SCALE E			
<b>MEN'S</b>			
Regular	34-44		
Short	34-44		
Long	34-44		
Extra Long	38-44		
<b>BOYS'</b>			
Regular	N/A		
Husky	N/A		
Coats available in this scale:			
371 page 28	391 page 30	471 page 32	991 page 34

SCALE F		
<b>MEN'S</b>		
Regular	34-50	
Short	34-50	
Long	34-50	
Extra Long	38-50	
<b>BOYS'</b>		
Regular	14-18	
Husky	N/A	
Coats available in this scale:		
122 page 42	132 page 44	192 page 43

**Note:** In size scale D, coat style 588 is available up to 68L and 68R. (All other sizing in size scale D applies.)

**Note:** 371, 391 and 471 pants available in sizes 27-44. 991 pant available in sizes 18-59.

**Note:** Even sizes only.

# COAT FITS DEFINED



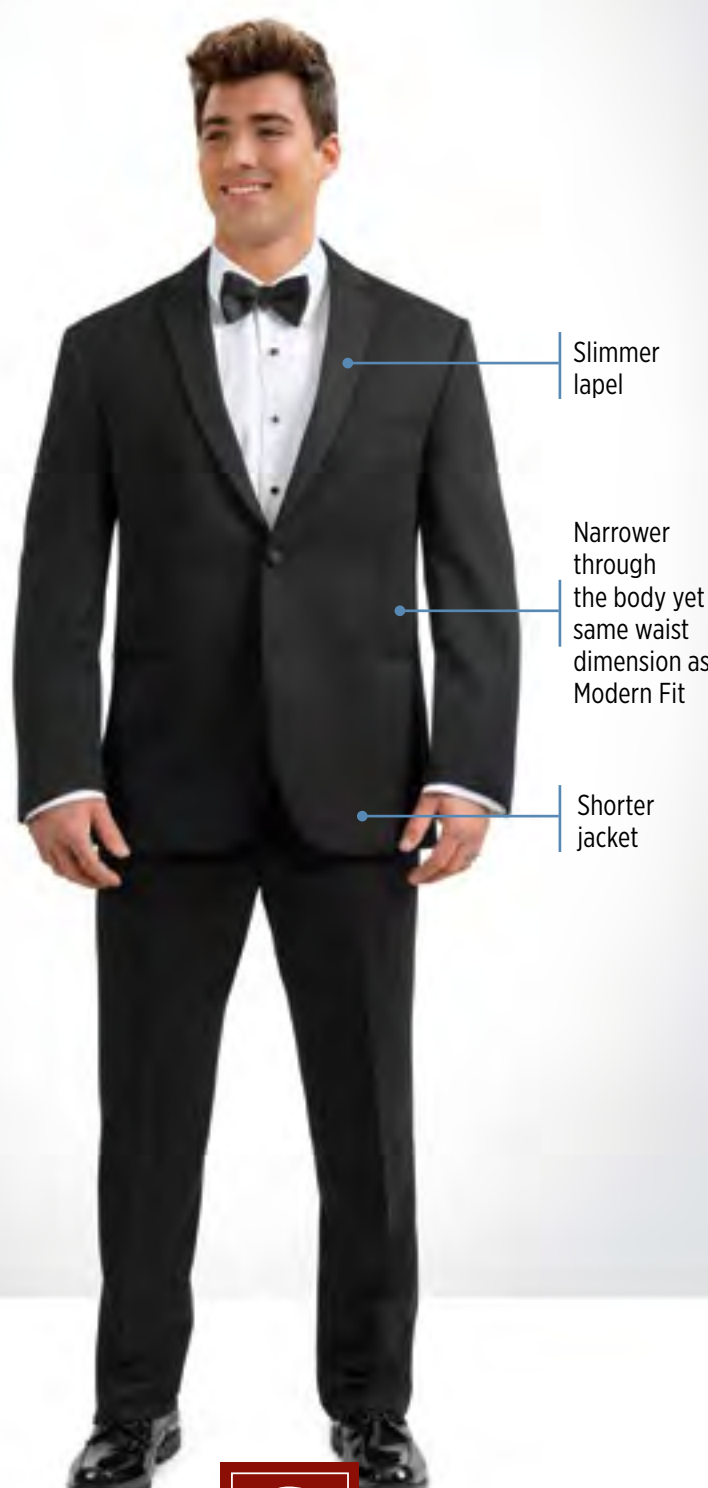
**T**  
Traditional Fit

A classic, fuller cut tuxedo.



**M**  
Modern Fit

Fashion-forward styling with a flattering silhouette.



**S**  
Slim Fit

Contemporary styling with a slimming appearance.



**U**  
Ultra Slim Fit

Trim and tapered styling, fits close to the body.

## About the Different Fits:

Any gentleman - including Big and Tall - can wear any of the fits! All of our styles work well with all body types. The only difference between the fits is the tuxedo or suit's silhouette.

## About the Different Fits:

Any gentleman - including Big and Tall - can wear any of the fits! All of our styles work well with all body types. The only difference between the fits is the tuxedo or suit's silhouette.

# PANT FITS DEFINED



## Flat Front Pants

Pant Styles:

800\*

## Modern Slim Fit Pants

Pant Styles:

252+ 362+ 392~ 750\* 990•  
301\* 372~ 472~ 850\*  
322+ 382+ 650\* 930\*

## Ultra Slim Fit Pants

Pant Styles:

202~ 231~ 302~ 361+ 471~  
211+ 251+ 321+ 371~ 921~  
221+ 262~ 350~ 391~ 991+

- \* pant styles with a beaded stripe
- + pant styles with no stripe
- pant styles with a faille piped leg stripe
- ~ pant styles with no stripe, buttons for suspenders & belt loops

NOTE:  
See page 75 for information about Pant Breaks

# PANT FITS DEFINED

Every detail of your ensemble is important, including the break in your pants. Use this guide to help you achieve your preferred look.



## Full Break

Deduct 0"

from the outseam measurement to achieve this break

Recommended Pant Styles:  
Modern Slim, Flat Front



## Half Break

Deduct 1"

from the outseam measurement to achieve this break

Recommended Pant Styles:  
Modern Slim, Flat Front



## Quarter Break

Deduct 1.5"

from the outseam measurement to achieve this break

Recommended Pant Styles:  
Ultra Slim



## No Break

Deduct 2"

from the outseam measurement to achieve this break

Recommended Pant Styles:  
Ultra Slim

## How To Order:

Refer to the Measuring Techniques on page 76 for instructions to measure a pant outseam. When ordering, deduct the recommended number of inches as shown above from the actual pant outseam measurement to achieve desired break.

NOTE: See page 74 for information about Pant Fits

# MEASURING TECHNIQUES

## NO LOOSE MEASUREMENTS OR FINGERS UNDER THE MEASURING TAPE

Always record the customer's height & weight, as well as his fit preference (regular or tighter fit)



CHEST

Ask the customer to move his arms outward. Place the tape under his arms and around the broadest part of his chest. Have the customer lower his arms to his side and relax. **Stand to the side of the customer to ensure the tape is level on both sides. Pull the tape until you feel tension and then record your measurement.**



OVERARM

With the customer's arms at his side, place the tape around the broadest part of the chest and arms. Stand to the side of the customer to ensure the tape is level on both sides. **Pull the tape until you feel tension and then record your measurement.**



NECK

Place tape around neck at the level where the shirt's collar would be buttoned. Add 1" to the measurement for the correct neck size. In the example above, a 15.5" neck measurement was taken, so a 16.5" neck size would be recorded.



HIP

Ask the customer to remove any items from his pockets. Stand to the side of the customer and place the tape around the broadest part of his hip and rear. **Pull the tape until you feel tension and record your measurement.**



OUTSEAM

Ask the customer to **REMOVE HIS SHOES** and look straight ahead during the measurement process. Start the tape measure level with the top of the waistband at the back of his pant and stretch the tape to the floor (with the customer's shoes off). Adjust and record the customer's outseam measurement. **Subtract 1" from the measurement if there is no pant break preference.**



PANT WAIST

Place the tape around customer's waist at the level he wears his pants, preferably an inch below his navel. **Pull the tape until you feel tension and record your measurement.**

The customer's hip measurement minus 6 inches informs us that they cannot wear a waist smaller than that number. Example: 40" hip minus 6" = 34" waist; this customer could not wear a 32" waist pant. Record the larger size, 34" pant waist.



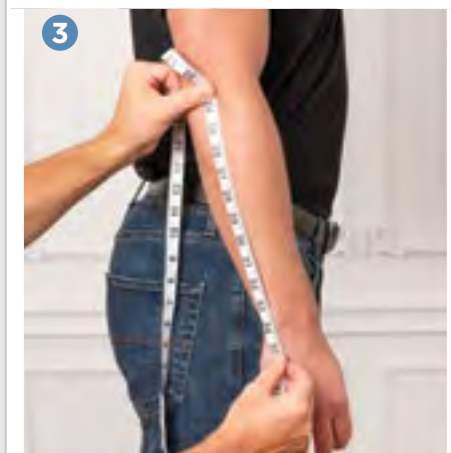
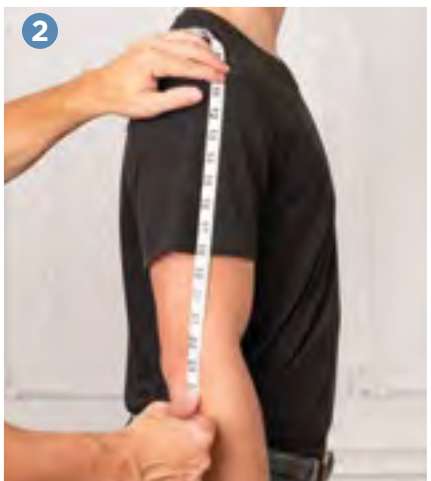
PANT WAIST

When a customer requests to wear his pants below his stomach, **place the tape around his waist, under his stomach. Pull the tape snug on customers with a stomach. RECORD AS THE PANT WAIST MEASUREMENT.**



STOMACH

Place the tape around the widest part of the customer's stomach. **This measurement helps determine the proper shirt and coat size for the customer. DO NOT RECORD AS THE WAIST MEASUREMENT.**



SHIRT SLEEVE

1 Start the tape at the base of the neck centered with the spine. Make sure the tape measure goes over the top of the customer's shoulder. 2 Take the tape down the arm to the point of their elbow 3 and then **measure an inch past the wrist bone.** It is always better to measure long versus short because a sleeve that is too short will likely be unacceptable to your customer.

# COAT SIZING GUIDE

Coat	Chest	Overarm	Waist	Hip	Inseam	Outseam	Neck	Sleeve	Height	Weight
34S	32 - 34	41 - 43	26 - 28	32 - 34	< 30.5	< 40.5	14 - 15.5	< 33.5	< 5' 8"	95 - 115
35S	33 - 35	42 - 44	27 - 29	33 - 35	< 30.5	< 40.5	14 - 15.5	< 33.5	< 5' 8"	105 - 125
36S	34 - 36	43 - 45	27 - 30	33 - 36	< 30.5	< 40.5	14 - 15.5	< 33.5	< 5' 8"	115 - 135
37S	35 - 37	44 - 46	28 - 31	34 - 37	< 30.5	< 40.5	14.5 - 15.5	< 33.5	< 5' 8"	125 - 145
38S	36 - 38	45 - 47	29 - 32	35 - 38	< 30.5	< 40.5	14.5 - 15.5	< 33.5	< 5' 8"	135 - 155
39S	37 - 39	46 - 48	30 - 33	36 - 39	< 30.5	< 40.5	15 - 16.5	< 33.5	< 5' 8"	145 - 165
40S	38 - 40	47 - 49	30 - 34	36 - 40	< 30.5	< 40.5	15 - 16.5	< 33.5	< 5' 8"	150 - 170
41S	39 - 41	48 - 50	31 - 35	37 - 41	< 30.5	< 40.5	15.5 - 16.5	< 33.5	< 5' 8"	155 - 175
42S	40 - 42	49 - 51	32 - 36	38 - 42	< 30.5	< 40.5	15.5 - 16.5	< 33.5	< 5' 8"	160 - 180
43S	41 - 43	50 - 52	33 - 37	39 - 43	< 30.5	< 40.5	16 - 17.5	< 33.5	< 5' 8"	170 - 190
44S	42 - 44	51 - 53	34 - 39	40 - 45	< 30.5	< 40.5	16 - 17.5	< 33.5	< 5' 8"	180 - 200
46S	44 - 46	53 - 55	36 - 41	42 - 47	< 30.5	< 40.5	16 - 17.5	< 33.5	< 5' 8"	190 - 215
48S	46 - 48	55 - 57	38 - 44	44 - 50	< 30.5	< 40.5	17 - 18.5	< 33.5	< 5' 8"	200 - 230
50S	48 - 50	57 - 59	40 - 46	46 - 52	< 30.5	< 40.5	17 - 18.5	< 33.5	< 5' 8"	210 - 250
34R	32 - 34	41 - 43	26 - 28	32 - 34	29 - 33	39 - 43	14 - 15.5	34 - 35	5' 8" - 6'	105 - 125
35R	33 - 35	42 - 44	27 - 29	33 - 35	29 - 33	39 - 43	14 - 15.5	34 - 35	5' 8" - 6'	115 - 135
36R	34 - 36	43 - 45	27 - 30	33 - 36	29 - 33	39 - 43	14 - 15.5	34 - 35	5' 8" - 6'	125 - 145
37R	35 - 37	44 - 46	28 - 31	34 - 37	29 - 33	39 - 43	14.5 - 15.5	34 - 35	5' 8" - 6'	130 - 150
38R	36 - 38	45 - 47	29 - 32	35 - 38	29 - 33	39 - 43	14.5 - 15.5	34 - 35	5' 8" - 6'	140 - 160
39R	37 - 39	46 - 48	30 - 33	36 - 39	29 - 33	39 - 43	15 - 16.5	34 - 35	5' 8" - 6'	150 - 170
40R	38 - 40	47 - 49	30 - 34	36 - 40	29 - 33	39 - 43	15 - 16.5	34 - 35	5' 8" - 6'	160 - 180
41R	39 - 41	48 - 50	31 - 35	37 - 41	29 - 33	39 - 43	15.5 - 16.5	34 - 35	5' 8" - 6'	170 - 190
42R	40 - 42	49 - 51	32 - 36	38 - 42	29 - 33	39 - 43	15.5 - 16.5	34 - 35	5' 8" - 6'	175 - 195
43R	41 - 43	50 - 52	33 - 37	39 - 43	29 - 33	39 - 43	16 - 17.5	34 - 35	5' 8" - 6'	185 - 205
44R	42 - 44	51 - 53	34 - 40	40 - 45	29 - 33	39 - 43	16 - 17.5	34 - 35	5' 8" - 6'	195 - 215
46R	44 - 46	53 - 55	36 - 42	42 - 47	29 - 33	39 - 43	16.5 - 17.5	34 - 35	5' 8" - 6'	205 - 225
48R	46 - 48	55 - 57	38 - 44	44 - 50	29 - 33	39 - 43	17 - 18.5	34 - 35	5' 8" - 6'	220 - 240
50R	48 - 50	57 - 59	40 - 47	46 - 53	29 - 33	39 - 43	17 - 18.5	34 - 35	5' 8" - 6'	240 - 260
52R	50 - 52	59 - 61	42 - 49	48 - 54	29 - 33	39 - 43	17 - 18.5	34 - 35	5' 8" - 6'	260 - 275
54R	52 - 54	61 - 63	44 - 51	50 - 56	29 - 33	39 - 43	18 - 19.5	34 - 35	5' 8" - 6'	275 - 290
56R	54 - 56	63 - 65	46 - 53	52 - 58	29 - 33	39 - 43	18 - 20.5	34 - 35	5' 8" - 6'	290 - 300
58R	56 - 58	65 - 67	48 - 55	54 - 60	29 - 33	39 - 43	18 - 20.5	34 - 35	5' 8" - 6'	300 - 310
60R	58 - 60	67 - 69	50 - 57	56 - 62	29 - 33	39 - 43	19 - 22.5	34 - 35	5' 8" - 6'	310 - 330
62R	60 - 62	69 - 71	52 - 59	58 - 64	29 - 33	39 - 43	20 - 22.5	34 - 35	5' 8" - 6'	320 - 340
64R	62 - 64	71 - 73	54 - 61	60 - 66	29 - 33	39 - 43	21 - 24	34 - 35	5' 8" - 6'	340 - 350
66R	64 - 66	73 - 75	56 - 63	62 - 68	29 - 33	39 - 43	23 - 26	34 - 35	5' 8" - 6'	350 - 370
34L	32 - 34	41 - 43	26 - 28	32 - 34	33 - 35.5	43 - 45.5	14 - 15.5	36 - 37	6' - 6' 3"	115 - 135
35L	33 - 35	42 - 44	27 - 29	33 - 35	33 - 35.5	43 - 45.5	14.5 - 15.5	36 - 37	6' - 6' 3"	125 - 145
36L	34 - 36	43 - 45	27 - 30	33 - 36	33 - 35.5	43 - 45.5	14 - 15.5	36 - 37	6' - 6' 3"	135 - 155
37L	35 - 37	44 - 46	28 - 31	34 - 37	33 - 35.5	43 - 45.5	14.5 - 15.5	36 - 37	6' - 6' 3"	140 - 160
38L	36 - 38	45 - 47	29 - 32	35 - 38	33 - 35.5	43 - 45.5	14.5 - 15.5	36 - 37	6' - 6' 3"	150 - 175
39L	37 - 39	46 - 48	30 - 33	36 - 39	33 - 35.5	43 - 45.5	15 - 16.5	36 - 37	6' - 6' 3"	155 - 185
40L	38 - 40	47 - 49	30 - 34	36 - 40	33 - 35.5	43 - 45.5	15 - 16.5	36 - 37	6' - 6' 3"	160 - 185
41L	39 - 41	48 - 50	31 - 35	37 - 41	33 - 35.5	43 - 45.5	15.5 - 16.5	36 - 37	6' - 6' 3"	170 - 190
42L	40 - 42	49 - 51	32 - 36	38 - 42	33 - 35.5	43 - 45.5	15.5 - 16.5	36 - 37	6' - 6' 3"	175 - 200
43L	41 - 43	50 - 52	33 - 37	39 - 43	33 - 35.5	43 - 45.5	16 - 17.5	36 - 37	6' - 6' 3"	185 - 210
44L	42 - 44	51 - 53	34 - 40	40 - 45	33 - 35.5	43 - 45.5	16 - 17.5	36 - 37	6' - 6' 3"	200 - 225
46L	44 - 46	53 - 55	36 - 42	42 - 47	33 - 35.5	43 - 45.5	16.5 - 17.5	36 - 37	6' - 6' 3"	210 - 235
48L	46 - 48	55 - 57	38 - 44	44 - 50	33 - 35.5	43 - 45.5	17 - 18.5	36 - 37	6' - 6' 3"	220 - 245
50L	48 - 50	57 - 59	40 - 47	46 - 52	33 - 35.5	43 - 45.5	17 - 18.5	36 - 37	6' - 6' 3"	240 - 265
52L	50 - 52	59 - 61	42 - 49	48 - 54	33 - 35.5	43 - 45.5	17 - 18.5	36 - 37	6' - 6' 3"	250 - 275
54L	52 - 54	61 - 63	44 - 51	50 - 56	33 - 35.5	43 - 45.5	18 - 19.5	36 - 37	6' - 6' 3"	265 - 290
56L	54 - 56	63 - 65	46 - 53	52 - 58	33 - 35.5	43 - 45.5	18 - 20.5	36 - 37	6' - 6' 3"	280 - 305
58L	56 - 58	65 - 67	48 - 55	54 - 60	33 - 35.5	43 - 45.5	18 - 20.5	36 - 37	6' - 6' 3"	295 - 315
60L	58 - 60	67 - 69	50 - 57	56 - 62	33 - 35.5	43 - 45.5	19 - 22.5	36 - 37	6' - 6' 3"	305 - 330
62L	60 - 62	69 - 71	52 - 59	58 - 64	33 - 35.5	43 - 45.5	20 - 22.5	36 - 37	6' - 6' 3"	315 - 340
64L	62 - 64	71 - 73	54 - 61	60 - 66	33 - 35.5	43 - 45.5	21 - 24	36 - 37	6' - 6' 3"	325 - 350
66L	64 - 66	73 - 75	56 - 63	62 - 68	33 - 35.5	43 - 45.5	23 - 26	36 - 37	6' - 6' 3"	350 - 375
38XL	36 - 38	45 - 47	28 - 32	34 - 38	> 35	> 44	15 - 16.5	> 36	> 6' 3"	155 - 180
39XL	37 - 39	46 - 48	30 - 33	36 - 39	> 35	> 44	15 - 16.5	> 36	> 6' 3"	160 - 185
40XL	38 - 40	47 - 49	30 - 34	36 - 40	> 35	> 44	15 - 16.5	> 36	> 6' 3"	165 - 190
42XL	40 - 42	49 - 51	32 - 36	38 - 42	> 35	> 44	15 - 16.5	> 36	> 6' 3"	180 - 205
44XL	42 - 44	51 - 53	34 - 40	40 - 46	> 35	> 44	16 - 17.5	> 36	> 6' 3"	200 - 230
46XL	44 - 46	53 - 55	36 - 42	42 - 48	> 35	> 44	16.5 - 17.5	> 36	> 6' 3"	215 - 240
48XL	46 - 48	55 - 57	38 - 44	44 - 50	> 35	> 44	17 - 18.5	> 36	> 6' 3"	230 - 270
50XL	48 - 50	57 - 59	40 - 46	46 - 52	> 35	> 44	17 - 18.5	> 36	> 6' 3"	240 - 290
52XL	50 - 52	59 - 61	42 - 48	48 - 54	> 35	> 44	17 - 18.5	> 36	> 6' 3"	250 - 300



# ADDITIONAL SIZING GUIDES

BOYS' FORMALWEAR MEASUREMENT GUIDE							
Age / Size	Height	Chest	Waist	Inseam	Outseam	Sleeve	Shirt
2	36"	22.5"	17 - 18"	13"	20"	18"	10-10.5" x 20"
3	38"	23"	19 - 20"	15"	22"	19"	10-10.5" x 20"
4	42"	24"	20 - 21"	15.5"	23"	20"	10-10.5" x 20"
5	45"	25"	21 - 22"	16.5"	24"	21"	11-11.5" x 22"
6	48"	25.5"	22 - 23"	18"	25.5"	22"	11-11.5" x 22"
7	50"	26"	23" - 24"	19.5"	27"	23"	11-11.5" x 24"
8	52"	26.5"	24"	21"	29"	24"	11-11.5" x 24"
9	54"	27.5"	24 - 25"	22.5"	31"	25"	12-12.5" x 26"
10	55"	28"	25"	24.5"	33"	26"	12-12.5" x 26"
11	57"	28.5"	25 - 26"	25"	33.5"	27"	12-12.5" x 28"
12	59"	29.5"	26"	26"	35"	28"	12-12.5" x 28"
13	60"	30.5"	26 - 27"	26.5"	35.5"	29"	13-13.5" x 30"
14	62"	31"	26 - 27"	27.5"	36.5"	30"	13-13.5" x 30"
15	63"	31.5"	27 - 28"	28.5"	38"	31"	13-13.5" x 32"
16	64"	32.5"	27 - 28"	29.5"	39"	31"	13-13.5" x 32"
17	65"	33.5"	28 - 29"	30"	39.5"	32"	13-13.5" x 32"
18	67"	34"	28 - 29"	30.5"	40.5"	32"	14-14.5" x 32"

BOYS' HUSKY SIZE GUIDE			
Age / Size	Height	Chest	Waist
8	51"	27.5"	26"
10	54"	28.5"	27"
12	58"	30.5"	28"
14	61"	32"	30"
16	63"	34"	32"

**Note:** Boys' Husky size coats are normally 1" shorter in the sleeves and 1/2" shorter in the body than a standard boy's size tuxedo jacket.

BOYS' SHIRT SIZE GUIDE			
Shirt Size	Neck	Max. Sleeve	Max. Mid-Section*
X-Small	10" - 10.5"	20"	23"
Small	11" - 11.5"	24"	27"
Medium	12" - 12.5"	28"	31"
Large	13" - 13.5"	32"	35"

**\*Note:** The Max Mid-Section measurement can be achieved by measuring around the largest part of the gentleman's stomach.

FITTED SHIRT SIZING CHART			
Shirt Size	Neck	Max. Chest	Max. Mid-Section*
Boys' Large	13" - 13.5"	32	29
Small	14" - 14.5"	36	33
Medium	15" - 15.5"	40	37
Large	16" - 16.5"	43	41
X-Large	17" - 17.5"	46	45
2X-Large	18" - 18.5"	50	48
3X-Large	19" - 19.5"	55	52

**\*Note:** The Max Mid-Section measurement can be achieved by measuring around the largest part of the gentleman's stomach.

REGULAR FIT SHIRT SIZING CHART			
Shirt Size	Neck	Max. Chest	Max. Mid-Section*
Small	14" - 14.5"	39	36
Medium	15" - 15.5"	42	40
Large	16" - 16.5"	45	44
X-Large	17" - 17.5"	49	48
2X-Large	18" - 18.5"	53	51
3X-Large	19" - 19.5"	57	55
4X-Large	20" - 21.5"	61	59
5X-Large	22" - 23.5"	65	63
6X-Large*	24" - 25.5"	69	67
7X-Large*	26" - 27.5"	73	71

**Note:** When fitting larger size shirts, you must pay close attention to the body size in relation to the neck. Heavy-set people may have a small neck size in proportion to their body. A man that has a 62" chest may have an 18.5" neck, but that shirt would not cover the width of his body.

**\*Note:** The Max Mid-Section measurement can be achieved by measuring around the largest part of the gentleman's stomach.

ADJUSTABLE PANT WAIST RANGE	
27 - 28 - 29	51 - 52 - 53
30 - 31 - 32	54 - 55 - 56
33 - 34 - 35	57 - 58 - 59
36 - 37 - 38	60 - 61 - 62
39 - 40 - 41	63 - 64 - 65
42 - 43 - 44	66 - 67 - 68
45 - 46 - 47	69 - 70 - 71
48 - 49 - 50	

REVERSIBLE BELT SIZING	
Size	Waist
X-Small	21 - 24
Small	25 - 28
Medium	29 - 32
Large	33 - 36
X-Large	37 - 40
2X-Large	41 - 44
3X-Large	45 - 48

NOVELTY SUSPENDER SIZING CHART	
Coat Size	Suspender Size
2B - 7B	Boys' (B)
8B - 46X	Men's (M)
47L - 60X	Long (L)

MEN'S TOP HAT & FEDORA SIZING		
Size	Circumference	Hat Size
Small	21" - 21 1/2"	6 7/8 - 7
Medium	21 5/8" - 22 1/4"	7 1/8 - 7 1/4
Large	22 1/2" - 23"	7 3/8 - 7 1/2
X-Large	23 1/4" - 23 7/8"	7 5/8

BOYS' FEDORA HAT SIZING	
Size	Circumference
Small	19 1/2" - 20"
Medium	20" - 20 1/2"
Large	20 3/4" - 21"

Coat Size Range	BOYS' BACKLESS VEST			MEN'S FULLBACK VEST													MEN'S BACKLESS VEST
	Small	Medium	Large	Regular Sizes						Long Sizes - 6' 2" and over							
				X-Small	Small	Medium	Large	X-Large	2X-Large	3X-Large	Small	Medium	Large	X-Large	2X-Large	3X-Large	
	3 - 6	7 - 12	14 - 16	188 - 35	36 - 38	39 - 42	43 - 45	46 - 48	50 - 54	56 - 58	36-38	39 - 42	43 - 45	46 - 48	50 - 54	56 - 58	60 - 70
	BS	BM	BL	RXS	RS	RM	RL	RX	R2	R3	LS	LM	LL	LX	L2	L3	SXA



FOR PURCHASE